

## Recombinant Phospho-IkB-α (Ser36) Monoclonal Antibody

catalog number: AN301280L

**Note:** Centrifuge before opening to ensure complete recovery of vial contents.

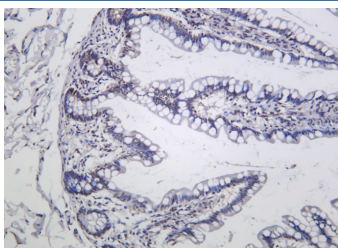
### Description

<b>Reactivity</b>	Human;Mouse;Rat
<b>Immunogen</b>	A synthetic peptide corresponding to residues around (Ser36) of Human Phospho-IκB-α
<b>Host</b>	Rabbit
<b>Isotype</b>	IgG,κ
<b>Clone</b>	9B2
<b>Purification</b>	Protein A
<b>Buffer</b>	PBS, 50% glycerol, 0.05% Proclin 300, 0.05% protein protectant.

### Applications Recommended Dilution

<b>IHC</b>	1:500-1:1000
------------	--------------

### Data



Immunohistochemistry of paraffin-embedded human colon using Recombinant Phospho-IkB-α (Ser36) Monoclonal Antibody at dilution of 1:200.

### Preparation & Storage

<b>Storage</b>	Store at -20°C Valid for 12 months. Avoid freeze / thaw cycles.
<b>Shipping</b>	Ice bag

### Background

This gene encodes a member of the NF-kappa-B inhibitor family, which contain multiple ankyrin repeat domains. The encoded protein interacts with REL dimers to inhibit NF-kappa-B/REL complexes which are involved in inflammatory responses. The encoded protein moves between the cytoplasm and the nucleus via a nuclear localization signal and CRM1-mediated nuclear export. Mutations in this gene have been found in ectodermal dysplasia anhidrotic with T-cell immunodeficiency autosomal dominant disease.

### For Research Use Only