

Recombinant Human UBE2M/UBC12 Protein

Catalog Number: PKSH033478

Note: Centrifuge before opening to ensure complete recovery of vial contents.

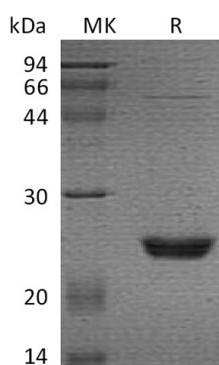
Description

Species	Human
Source	E.coli-derived Human UBE2M/UBC12 protein Met1-Lys183
Calculated MW	20.9 kDa
Observed MW	25 kDa
Accession	P61081
Bio-activity	Not validated for activity

Properties

Purity	> 95 % as determined by reducing SDS-PAGE.
Concentration	Subject to label value.
Endotoxin	< 1.0 EU per µg of the protein as determined by the LAL method.
Storage	Store at < -20°C, stable for 6 months. Please minimize freeze-thaw cycles.
Shipping	This product is provided as liquid. It is shipped at frozen temperature with blue ice/ gel packs. Upon receipt, store it immediately at < - 20°C.
Formulation	Supplied as a 0.2 µm filtered solution of 50mM HEPES, 2mM DTT, 150mM NaCl, 10% Glycerol, pH 7.5.

Data



> 95 % as determined by reducing SDS-PAGE.

Background

UBE2M is a member of the E2 ubiquitin-conjugating enzyme family. Ubiquitination involves at least three classes of enzymes: ubiquitin-activating enzymes; or E1s; ubiquitin-conjugating enzymes; or E2s; and ubiquitin-protein ligases; or E3s. This protein is linked with a ubiquitin-like protein; NEDD8; which can be conjugated to cellular proteins; such as Cdc53/culin. UBE2M accepts the ubiquitin-like protein NEDD8 from the UBA3-NAE1 E1 complex and catalyzes its covalent attachment to other proteins. The specific interaction with the E3 ubiquitin ligase RBX1; but not RBX2; suggests that the RBX1-UBE2M complex neddylates specific target proteins; such as CUL1; CUL2; CUL3 and CUL4. It involved in cell proliferation and is an important cellular mechanism for targeting abnormal or short-lived proteins for degradation.

For Research Use Only

Toll-free: 1-888-852-8623
Web: www.elabscience.com

Tel: 1-832-243-6086
Email: techsupport@elabscience.com

Fax: 1-832-243-6017