

Tf Polyclonal Antibody

catalog number: **D-AB-10115L**

Note: Centrifuge before opening to ensure complete recovery of vial contents.

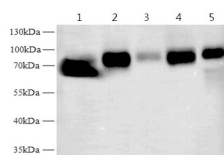
Description

Reactivity	Human;Mouse;Rat
Immunogen	Recombinant Mouse TF protein expressed by E.coli
Host	Rabbit
Isotype	Rabbit IgG
Purification	Antigen Affinity Purification
Buffer	PBS with 0.05% Proclin300, 1% protective protein and 50% glycerol, pH7.4

Applications

Applications	Recommended Dilution
WB	1:5000-10000
IHC	1:1200-1:2400

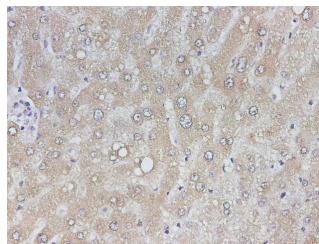
Data



Western blot with Tf Polyclonal antibody at dilution of 1:10000. lane 1: Mouse testis, lane 2: Mouse kidney, lane 3: Mouse liver, lane 4: Rat testis, lane 5: Rat liver

Observed-MW: 77 kDa

Calculated-MW: 77 kDa



Immunohistochemistry of paraffin-embedded Human liver using Tf Polyclonal Antibody at dilution of 1:2400

Preparation & Storage

Storage	Store at -20°C Valid for 12 months. Avoid freeze / thaw cycles.
Shipping	The product is shipped with ice pack, upon receipt, store it immediately at the temperature recommended.

Background

Transferrin (TF) is also named as Beta-1 metal-binding globulin, Siderophilin and belongs to the transferrin family. It is a bilobal iron-binding protein that plays the crucial role of binding ferric iron and keeping it in solution, thereby controlling the levels of this important metal. Serum transferrin may have a further role in stimulating cell proliferation.

For Research Use Only