

RETREG1 Polyclonal Antibody

catalog number: E-AB-52883

Note: Centrifuge before opening to ensure complete recovery of vial contents.

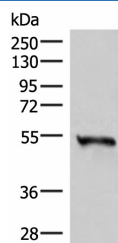
Description

Reactivity	Human;Mouse;Rat
Immunogen	Fusion protein of human RETREG1
Host	Rabbit
Isotype	IgG
Purification	Antigen affinity purification
Buffer	Phosphate buffered solution, pH 7.4, containing 0.05% stabilizer and 50% glycerol.

Applications

Applications	Recommended Dilution
WB	1:500-1:2000
IHC	1:50-1:300

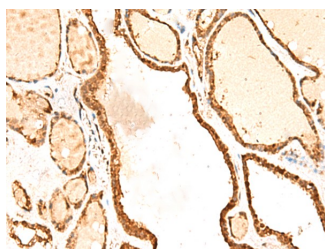
Data



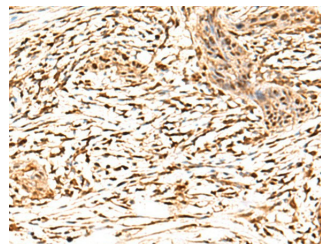
Western blot analysis of Human heart tissue lysate using RETREG1 Polyclonal Antibody at dilution of 1:300

Observed-MW:Refer to figures

Calculated-MW:55 kDa



Immunohistochemistry of paraffin-embedded Human thyroid cancer tissue using RETREG1 Polyclonal Antibody at dilution of 1:50(×200)



Immunohistochemistry of paraffin-embedded Human esophagus cancer tissue using RETREG1 Polyclonal Antibody at dilution of 1:50(×200)

Preparation & Storage

Storage	Store at -20°C Valid for 12 months. Avoid freeze / thaw cycles.
Shipping	The product is shipped with ice pack,upon receipt,store it immediately at the temperature recommended.

Background

For Research Use Only

The protein encoded by this gene is a cis-Golgi transmembrane protein that may be necessary for the long-term survival of nociceptive and autonomic ganglion neurons. Mutations in this gene are a cause of hereditary sensory and autonomic neuropathy type IIB (HSAN IIB), and this gene may also play a role in susceptibility to vascular dementia. Alternatively spliced transcript variants encoding multiple isoforms have been observed for this gene.

For Research Use Only

Toll-free: 1-888-852-8623
Web: www.elabscience.com

Tel: 1-832-243-6086
Email: techsupport@elabscience.com

Fax: 1-832-243-6017

Rev. V1.7