

ISL2 Polyclonal Antibody

catalog number: E-AB-52044

Note: Centrifuge before opening to ensure complete recovery of vial contents.

Description

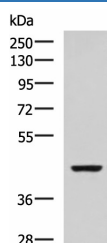
Reactivity	Human;Mouse;Rat
Immunogen	Synthetic peptide of human ISL2
Host	Rabbit
Isotype	IgG
Purification	Antigen affinity purification
Conjugation	Unconjugated
buffer	Phosphate buffered solution, pH 7.4, containing 0.05% stabilizer and 50% glycerol.

Applications

Recommended Dilution

WB	1:500-1:2000
-----------	--------------

Data



Western blot analysis of SP20 cell lysate using ISL2

Polyclonal Antibody at dilution of 1:800

Observed-MV: Refer to figures

Calculated-MV: 40 kDa

Preparation & Storage

Storage	Store at -20°C Valid for 12 months. Avoid freeze / thaw cycles.
Shipping	The product is shipped with ice pack, upon receipt, store it immediately at the temperature recommended.

Background

ISL2 (ISL LIM Homeobox 2) is a Protein Coding gene. Among its related pathways are Neural Stem Cell Differentiation Pathways and Lineage-specific Markers. Gene Ontology (GO) annotations related to this gene include sequence-specific DNA binding. An important paralog of this gene is ISL1.

For Research Use Only