

ALDH1A1/2/3 Polyclonal Antibody

Catalog Number: E-AB-13801



Note: Centrifuge before opening to ensure complete recovery of vial contents.

Description

Reactivity	Human, Mouse
Immunogen	Recombinant protein of human ALDH1A1/ALDH1A2/ALDH1A3
Host	Rabbit
Isotype	IgG
Purification	Affinity purification
Conjugation	Unconjugated
Formulation	PBS with 0.05% sodium azide and 50% glycerol, PH7.4

Applications Recommended Dilution

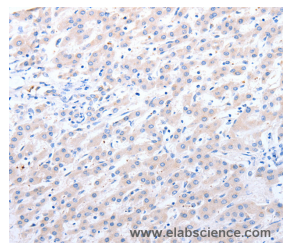
WB	1:500-1:2000
IHC	1:50-1:150

Data



Western Blot analysis of Mouse liver tissue using ALDH1A1/2/3 Polyclonal Antibody at dilution of 1:400

Calculated Mw: 57kDa



Immunohistochemistry of paraffin-embedded Human liver cancer using ALDH1A1/2/3 Polyclonal Antibody at dilution of 1:40

Preparation & Storage

Storage Store at -20°C. Avoid freeze / thaw cycles.

Background

This protein belongs to the aldehyde dehydrogenase family of proteins. The product of this gene is an enzyme that catalyzes the synthesis of retinoic acid (RA) from retinaldehyde. Retinoic acid, the active derivative of vitamin A (retinol), is a hormonal signaling molecule that functions in developing and adult tissues. The studies of a similar mouse gene suggest that this enzyme and the cytochrome CYP26A1, concurrently establish local embryonic retinoic acid levels which facilitate posterior organ development and prevent spina bifida. Four transcript variants encoding distinct isoforms have been identified for this gene.

For Research Use Only

A Reliable Research Partner in Life Science and Medicine

Toll-free: 1-888-852-8623

Web: www.elabscience.com

Tel: 1-832-243-6086

Email: techsupport@elabscience.com

Fax: 1-832-243-6017