

Recombinant PEBP1/RKIP Monoclonal Antibody

catalog number: AN300163P

Note: Centrifuge before opening to ensure complete recovery of vial contents.

Description

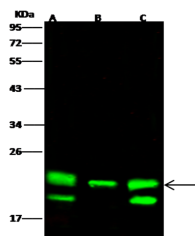
Reactivity	Human
Immunogen	Recombinant Human PEBP1 / RKIP Protein
Host	Rabbit
Isotype	IgG
Clone	2D12
Purification	Protein A
Buffer	0.2 µm filtered solution in PBS

Applications

Recommended Dilution

WB	1:500-1:2000
-----------	--------------

Data



Western Blot with PEBP1 / RKIP Monoclonal Antibody at dilution of 1:500. Lane A: HeLa Whole Cell Lysate, Lane B: A549 Whole Cell Lysate, Lane C: HepG2 Whole Cell Lysate, Lysates/proteins at 30 µg per lane.

Observed-MW:21 kDa

Calculated-MW:21 kDa

Preparation & Storage

Storage	This antibody can be stored at 2°C-8°C for one month without detectable loss of activity. Antibody products are stable for twelve months from date of receipt when stored at -20°C to -80°C. Preservative-Free. Avoid repeated freeze-thaw cycles.
Shipping	Ice bag

Background

This gene encodes a member of the phosphatidylethanolamine-binding family of proteins and has been shown to modulate multiple signaling pathways, including the MAP kinase (MAPK), NF-kappa B, and glycogen synthase kinase-3 (GSK-0) signaling pathways. The encoded protein can be further processed to form a smaller cleavage product, hippocampal cholinergic neurostimulating peptide (HCNP), which may be involved in neural development. This gene has been implicated in numerous human cancers and may act as a metastasis suppressor gene. Multiple pseudogenes of this gene have been identified in the genome.

For Research Use Only