

Recombinant alpha Smooth Muscle Actin Monoclonal Antibody

catalog number: **E-AB-81457**

Note: Centrifuge before opening to ensure complete recovery of vial contents.

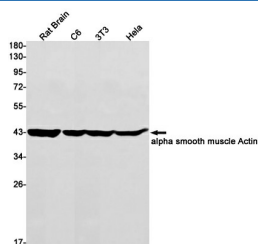
Description

Reactivity	Human;Mouse;Rat
Immunogen	A synthetic peptide of human alpha smooth muscle Actin
Host	Rabbit
Isotype	IgG
Clone	R01-8C7
Purification	Affinity Purified
Buffer	50mM Tris-Glycine(pH 7.4), 0.15M NaCl, 40% Glycerol, 0.05% stabilizer and 0.05% protective protein.

Applications

Applications	Recommended Dilution
WB	1:500-1:1000
IHC	1:50-1:100

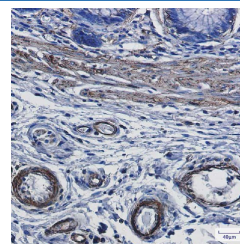
Data



Western blot detection of alpha smooth muscle Actin in Rat Brain,C6,3T3,Hela cell lysates using alpha smooth muscle Actin Rabbit mAb(1:1000 diluted).Predicted band size:42kDa.Observed band size:42kDa.

Observed-MW:42 kDa

Calculated-MW:42 kDa



Immunohistochemistry of alpha smooth muscle Actin in paraffin-embedded Human colon cancer tissue using alpha smooth muscle Actin Rabbit mAb at dilution 1:100

Preparation & Storage

Storage	Store at -20°C Valid for 12 months. Avoid freeze / thaw cycles.
Shipping	The product is shipped with ice pack,upon receipt,store it immediately at the temperature recommended.

Background

The protein encoded by this gene belongs to the actin family of proteins, which are highly conserved proteins that play a role in cell motility, structure and integrity. Alpha, beta and gamma actin isoforms have been identified, with alpha actins being a major constituent of the contractile apparatus, while beta and gamma actins are involved in the regulation of cell motility. This actin is an alpha actin that is found in skeletal muscle. Defects in this gene cause aortic aneurysm familial thoracic type 6. Multiple alternatively spliced variants, encoding the same protein, have been identified.

For Research Use Only