

CCDC85C Polyclonal Antibody

catalog number: E-AB-19670

Note: Centrifuge before opening to ensure complete recovery of vial contents.

Description

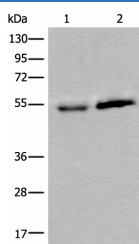
Reactivity	Human;Mouse
Immunogen	Synthetic peptide of human CCDC85C
Host	Rabbit
Isotype	IgG
Purification	Antigen affinity purification
Conjugation	Unconjugated
Buffer	Phosphate buffered solution, pH 7.4, containing 0.05% stabilizer and 50% glycerol.

Applications

Recommended Dilution

WB	1:500-1:2000
IHC	1:30-1:150

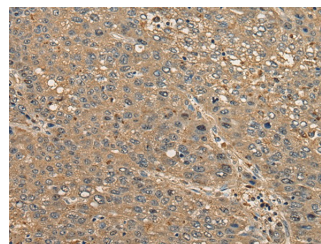
Data



Western blot analysis of Human fetal intestines tissue and Human breast cancer tissue lysates using CCDC85C Polyclonal Antibody at dilution of 1:400

Observed-MV:Refer to figures

Calculated-MV:45 kDa



Immunohistochemistry of paraffin-embedded Human liver cancer tissue using CCDC85C Polyclonal Antibody at dilution of 1:30(×200)

Preparation & Storage

Storage	Store at -20°C Valid for 12 months. Avoid freeze / thaw cycles.
Shipping	The product is shipped with ice pack, upon receipt, store it immediately at the temperature recommended.

Background

CCDC85C may play an important role in cortical development, especially in the maintenance of radial glia.