

Luciferase Monoclonal Antibody

catalog number: E-AB-22134

Note: Centrifuge before opening to ensure complete recovery of vial contents.

Description

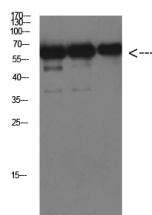
Reactivity	Firefly
Immunogen	Recombinant Protein of Luciferase of Luciferase
Host	Mouse
Isotype	IgG
Clone	2C2
Purification	Protein A purification
Buffer	Phosphate buffered solution, pH 7.4, containing 0.05% stabilizer, 0.5% protein protectant and 50% glycerol.

Applications

WB 1:1000-2000

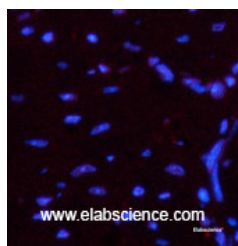
Recommended Dilution

Data



Western Blot analysis of Luciferase protein using Luciferase Monoclonal Antibody at dilution of 1:1000.

Observed-MW:60 kDa



Immunofluorescence analysis of Mouse heart tissue using Luciferase Monoclonal Antibody at dilution of 1:200.

Preparation & Storage

Storage	Store at -20°C Valid for 12 months. Avoid freeze / thaw cycles.
Shipping	The product is shipped with ice pack, upon receipt, store it immediately at the temperature recommended.

Background

Luciferase from the firefly has become one of the more widely used reporter proteins for the study of gene expression. Luciferase catalyzes a bioluminescent reaction which requires the substrate luciferin as well as Mg²⁺ and ATP. Mixing these reagents with the cell extract containing luciferase, results in a flash of light that decays rapidly. This light can be detected by a luminometer. The total light emission is proportional to the luciferase activity of the sample.

For Research Use Only