

SPI1 Polyclonal Antibody

Catalog Number:E-AB-52113



Note: Centrifuge before opening to ensure complete recovery of vial contents.

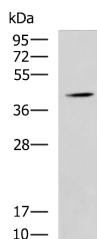
Description

Reactivity	Human, Mouse, Rat
Immunogen	Synthetic peptide of human SPI1
Host	Rabbit
Isotype	IgG
Purification	Antigen affinity purification
Conjugation	Unconjugated
Formulation	PBS with 0.05% NaN ₃ and 40% Glycerol,pH7.4

Applications Recommended Dilution

WB	1:500-1:2000
ELISA	1:5000-1:10000

Data



Western blot analysis of Mouse liver tissue lysate using
SPI1 Polyclonal Antibody at dilution of 1:1600

Observed MW:Refer to figures
Calculated Mw:31 kDa

Preparation & Storage

Storage Store at -20°C. Avoid freeze / thaw cycles.

Background

SPI1 encodes an ETS-domain transcription factor that activates gene expression during myeloid and B-lymphoid cell development. The nuclear protein binds to a purine-rich sequence known as the PU-box found near the promoters of target genes, and regulates their expression in coordination with other transcription factors and cofactors. The protein can also regulate alternative splicing of target genes. Multiple transcript variants encoding different isoforms have been found for this gene. SPI1 (Spi-1 Proto-Oncogene) is a Protein Coding gene. Diseases associated with SPI1 include Inflammatory Diarrhea and Interdigitating Dendritic Cell Sarcoma. Among its related pathways are Validated targets of C-MYC transcriptional repression and C-MYB transcription factor network. GO annotations related to this gene include transcription factor activity, sequence-specific DNA binding and RNA binding. An important paralog of this gene is SPIB.

For Research Use Only

A Reliable Research Partner in Life Science and Medicine

Toll-free: 1-888-852-8623

Web: www.elabscience.com

Tel: 1-832-243-6086

Email: techsupport@elabscience.com

Fax: 1-832-243-6017