

## Recombinant Human IL-23 Recetor/IL-23R Protein (Fc Tag)

Catalog Number: PKSH032579

**Note:** Centrifuge before opening to ensure complete recovery of vial contents.

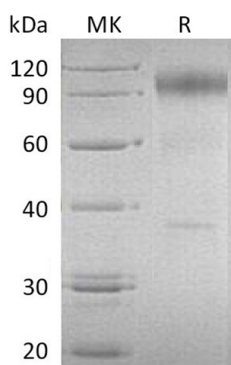
### Description

<b>Species</b>	Human
<b>Source</b>	HEK293 Cells-derived Human IL-23 Recetor;IL-23R protein Gly24-Asp353, with an C-terminal Fc
<b>Calculated MW</b>	65.0 kDa
<b>Observed MW</b>	90-120 kDa
<b>Accession</b>	Q5VWK5
<b>Bio-activity</b>	Immobilized Human IL-23R-Fc at 10µg/ml (100 µl/well)can bind Human IL-23-His.The ED <sub>50</sub> of Human IL-23-His is 0.248 µg/ml.

### Properties

<b>Purity</b>	> 90 % as determined by reducing SDS-PAGE.
<b>Endotoxin</b>	< 1.0 EU per µg of the protein as determined by the LAL method.
<b>Storage</b>	Generally, lyophilized proteins are stable for up to 12 months when stored at -20 to -80°C. Reconstituted protein solution can be stored at 4-8°C for 2-7 days. Aliquots of reconstituted samples are stable at < -20°C for 3 months.
<b>Shipping</b>	This product is provided as lyophilized powder which is shipped with ice packs.
<b>Formulation</b>	Lyophilized from a 0.2 µm filtered solution of PBS, pH 7.4. Normally 5% - 8% trehalose, mannitol and 0.01% Tween 80 are added as protectants before lyophilization. Please refer to the specific buffer information in the printed manual.
<b>Reconstitution</b>	Please refer to the printed manual for detailed information.

### Data



> 90 % as determined by reducing SDS-PAGE.

### Background

Interleukin 23 receptor (IL23R) is a type I cytokine receptor for IL23. IL23 receptor complex is comprised of two subunits; the IL12Rβ1 subunit; which is shared with several cytokines; and a subunit that is unique to IL-23. IL23; after binding to IL23R; activates memory T cells and mediates pro-inflammatory activities in part by the production of IL17 through activation of TH17 lymphocytes. IL23R is expressed on T cells; NK cells; dendritic cells; and macrophages. In fact; polymorphisms of the IL23R gene were reported to be associated with susceptibility to inflammatory diseases and autoimmune diseases such as psoriasis; multiple sclerosis; Graves's opthalmopathy and inflammatory bowel diseases. The IL23R is known to be critically involved in the carcinogenesis of different malignant tumor.

### For Research Use Only

Toll-free: 1-888-852-8623  
Web: [www.elabscience.com](http://www.elabscience.com)

Tel: 1-832-243-6086  
Email: [techsupport@elabscience.com](mailto:techsupport@elabscience.com)

Fax: 1-832-243-6017