

GFAP Polyclonal Antibody

catalog number: **E-AB-70040**

Note: Centrifuge before opening to ensure complete recovery of vial contents.

Description

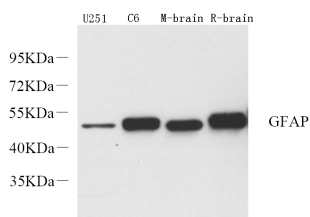
Reactivity	Human;Mouse;Rat
Immunogen	KLH conjugated Synthetic peptide corresponding to Mouse GFAP
Host	Rabbit
Isotype	IgG
Purification	Affinity purification
Buffer	Phosphate buffered solution, pH 7.4, containing 0.05% stabilizer, 1% protein protectant and 50% glycerol.

Applications

Recommended Dilution

WB	1:1000-1:3000
IHC	1:300-1:800
IF	1:200-1:500

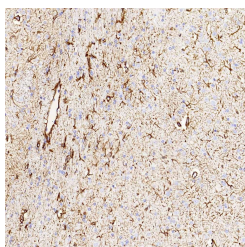
Data



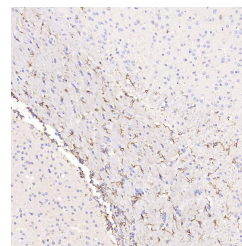
Western Blot analysis of various samples using GFAP Polyclonal Antibody at dilution of 1:2000.

Observed-MW:49 kDa

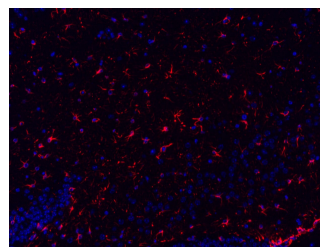
Calculated-MW:49 kDa



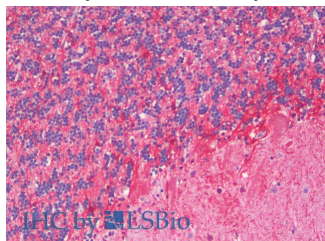
Immunohistochemistry analysis of paraffin-embedded rat brain using GFAP Polyclonal Antibody at dilution of 1:500.



Immunohistochemistry analysis of paraffin-embedded mouse brain using GFAP Polyclonal Antibody at dilution of 1:500.



Immunofluorescence analysis of paraffin-embedded mouse brain using GFAP Polyclonal Antibody at dilution of 1:300.



For Research Use Only

Toll-free: 1-888-852-8623
Web: www.elabscience.com

Tel: 1-832-243-6086
Email: techsupport@elabscience.com

Fax: 1-832-243-6017

Rev. V1.7

Immunohistochemistry analysis of paraffin-embedded
Human Cerebellum using GFAP Polyclonal
Antibody(Elabscience Product Detected by Lifespan).

Preparation & Storage

Storage

Store at -20°C Valid for 12 months. Avoid freeze / thaw cycles.

Shipping

The product is shipped with ice pack,upon receipt,store it immediately at the temperature recommended.

Background

GFAP (Glial fibrillary acidic protein),an intermediate-filament (IF) protein ,is specifically expressed in cells of astroglial lineage and is widely used to mark the astroglia in the brain. It is also used as a marker for intracranial and intraspinal tumors arising from astrocytes.

For Research Use Only