

COL3A1 Monoclonal Antibody

Catalog Number: E-AB-22071 1 Publications



Note: Centrifuge before opening to ensure complete recovery of vial contents.

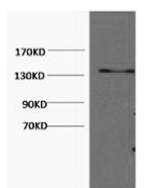
Description

Reactivity	Human, Mouse, Rat
Immunogen	Synthetic Peptide
Host	Mouse
Isotype	IgG
Clone	Clone: 5G2
Purification	Protein A purification
Conjugation	Unconjugated
Formulation	PBS with 0.02% sodium azide and 50% glycerol pH 7.4.

Applications Recommended Dilution

WB	1:500-1:2000
IHC	1:50-300
IF	1:100-1:300

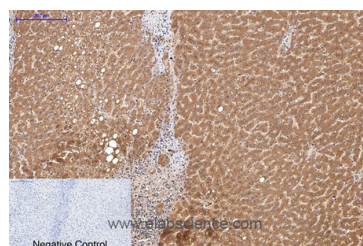
Data



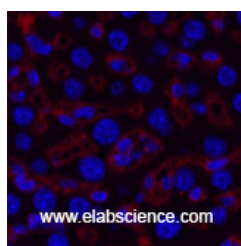
www.elabscience.com

Western Blot analysis of HeLa cells using COL3A1 Monoclonal Antibody at dilution of 1:1000.

Observed Mw: 138kDa
Calculated Mw: 139kDa



Immunohistochemistry of paraffin-embedded Human liver tissue using COL3A1 Monoclonal Antibody at dilution of 1:200.



www.elabscience.com

Immunofluorescence analysis of Mouse liver tissue using COL3A1 Monoclonal Antibody at dilution of 1:200.

Preparation & Storage

Storage Store at -20°C. Avoid freeze / thaw cycles.

Background

For Research Use Only

A Reliable Research Partner in Life Science and Medicine

Toll-free: 1-888-852-8623

Web: www.elabscience.com

Tel: 1-832-243-6086

Email: techsupport@elabscience.com

Fax: 1-832-243-6017

COL3A1 Monoclonal Antibody

Catalog Number: E-AB-22071

1 Publications



This gene encodes the pro-alpha1 chains of type III collagen, a fibrillar collagen that is found in extensible connective tissues such as skin, lung, uterus, intestine and the vascular system, frequently in association with type I collagen. Mutations in this gene are associated with Ehlers-Danlos syndrome types IV, and with aortic and arterial aneurysms. Two transcripts, resulting from the use of alternate polyadenylation signals, have been identified for this gene.

For Research Use Only

A Reliable Research Partner in Life Science and Medicine

Toll-free: 1-888-852-8623

Tel: 1-832-243-6086

Fax: 1-832-243-6017

Web: www.elabscience.com

Email: techsupport@elabscience.com