

Recombinant NR1D1 Monoclonal Antibody

Catalog Number: E-AB-81587



Note: Centrifuge before opening to ensure complete recovery of vial contents.

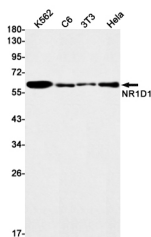
Description

Reactivity	Human, Mouse, Rat
Immunogen	A synthetic peptide of human NR1D1
Host	Rabbit
Isotype	IgG
Clone	R05-8B1
Purification	Affinity Purified
Conjugation	Unconjugated
Formulation	50mM Tris-Glycine (pH 7.4), 0.15M NaCl, 40% Glycerol, 0.01% Sodium azide and 0.05% protective protein

Applications Recommended Dilution

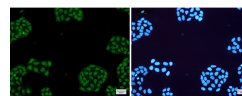
WB	1:500-1:1000
IF	1:20-1:100

Data



Western blot detection of NR1D1 in K562, C6, 3T3, HeLa cell lysates using NR1D1 Rabbit mAb (1:1000 diluted). Predicted band size: 67kDa. Observed band size: 67kDa.

Observed Mw: 67kDa
Calculated Mw: 67kDa



Immunofluorescence of NR1D1 (green) in HeLa cells using NR1D1 Rabbit mAb at dilution 1:50, and DAPI (blue)

Preparation & Storage

Storage Store at -20°C. Avoid freeze / thaw cycles.

Background

This gene encodes a transcription factor that is a member of the nuclear receptor subfamily 1. The encoded protein is a ligand-sensitive transcription factor that negatively regulates the expression of core clock proteins. In particular this protein represses the circadian clock transcription factor aryl hydrocarbon receptor nuclear translocator-like protein 1 (ARNTL). This protein may also be involved in regulating genes that function in metabolic, inflammatory and cardiovascular processes.

For Research Use Only

A Reliable Research Partner in Life Science and Medicine

Toll-free: 1-888-852-8623

Web: www.elabscience.com

Tel: 1-832-243-6086

Email: techsupport@elabscience.com

Fax: 1-832-243-6017