

# Recombinant Human Rac2 protein (His tag)

Catalog Number:PDEH100344



**Note:** Centrifuge before opening to ensure complete recovery of vial contents.

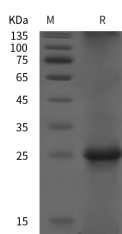
## Description

<b>Synonyms</b>	EN-7;Gx;HSPC022;p21-Rac2
<b>Species</b>	Human
<b>Expression Host</b>	E.coli
<b>Sequence</b>	Met 1-Cys 189
<b>Accession</b>	P15153
<b>Calculated Molecular Weight</b>	20.7 kDa
<b>Observed molecular weight</b>	25 kDa
<b>Tag</b>	N-His & C-His

## Properties

<b>Purity</b>	> 95 % as determined by reducing SDS-PAGE.
<b>Endotoxin</b>	Please contact us for more information.
<b>Storage</b>	Generally, lyophilized proteins are stable for up to 12 months when stored at -20 to -80°C. Reconstituted protein solution can be stored at 4-8°C for 2-7 days. Aliquots of reconstituted samples are stable at < -20°C for 3 months.
<b>Shipping</b>	This product is provided as lyophilized powder which is shipped with ice packs.
<b>Formulation</b>	Lyophilized from sterile PBS, pH 7.4. Normally 5 % - 8 % trehalose, mannitol and 0.01% Tween80 are added as protectants before lyophilization. Please refer to the specific buffer information in the printed manual.
<b>Reconstitution</b>	Please refer to the printed manual for detailed information.

## Data



> 95 % as determined by reducing SDS-PAGE.

## Background

Ras-related C3 botulinum toxin substrate 2 (Rac2) is a small G-protein belonging to the Ras subfamily of the GTPase family. Rac2 acts as an "on / off" switch for signal transduction cascades and motilities. When GDP is attached to the small G-protein, the enzyme is inactivated. Release of the GDP and replace of the GTP cativate the GTPase. Rac2 remains active until the GTP is hydrolyzed to GDP. Rac2 is a hematopoietic-specific Rho family GTPase implicated as an important constituent of the NADPH oxidase complex and shares 92% amino acid identity with the ubiquitously expressed Rac1. The small G-protein Rac2 regulates the rearrangements of actin and membrane necessary for Fcy receptor-mediated phagocytosis by macrophages. Activated Rac2 binds to the p21-binding domain of PAK1 and this binding provided a basis for microscopic methods to localize activation of these G proteins inside cells.

## For Research Use Only

A Reliable Research Partner in Life Science and Medicine

Toll-free: 1-888-852-8623

Web: [www.elabscience.com](http://www.elabscience.com)

Tel: 1-832-243-6086

Email: [techsupport@elabscience.com](mailto:techsupport@elabscience.com)

Fax: 1-832-243-6017