

POMC Polyclonal Antibody

catalog number: E-AB-40635

Note: Centrifuge before opening to ensure complete recovery of vial contents.

Description

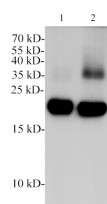
Reactivity	Mouse;Rat
Immunogen	Synthetic peptide.
Host	Rabbit
Isotype	IgG
Purification	Antigen Affinity Purification
Conjugation	Unconjugated
buffer	PBS with 0.05% proclin 300, 1% protective protein and 50% glycerol,pH7.4

Applications

Recommended Dilution

WB	1:1000-1:2000
-----------	---------------

Data



Western blotting with anti-POMC polyclonal Antibody at dilution of 1:1000. Lane 1: Mouse pituitary lysates, lane 2: Rat pituitary lysate.

Observed-MV:35 kDa, 16 kDa

Calculated-MV:29 kDa

Preparation & Storage

Storage	Store at -20°C Valid for 12 months. Avoid freeze / thaw cycles.
Shipping	The product is shipped with ice pack,upon receipt,store it immediately at the temperature recommended.

Background

Pro-opiomelanocortin (POMC) is a precursor protein expressed in the pituitary and the brain where it is processed into several peptide hormones and neuropeptides. Among these peptides are ACTH, α - and β -MSH, β - and γ -LPH,CLIP, β -endorphin,and N-POMC. POMC is involved in hypothalamic circuits regulating feeding behavior and POMC-producing neurons promote satiety. POMC neurons are also the target of leptin and insulin for the promotion of the browning of white fat.

For Research Use Only