

CAV1 Polyclonal Antibody

catalog number: E-AB-30778

Note: Centrifuge before opening to ensure complete recovery of vial contents.

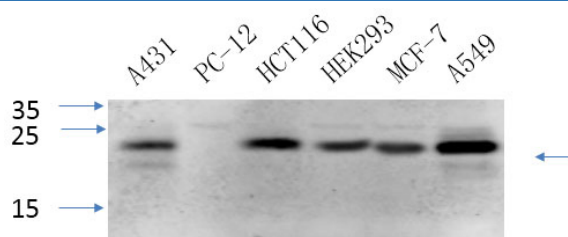
Description

Reactivity	Human;Mouse;Rat
Immunogen	Synthesized peptide derived from the C-terminal region of human Caveolin-1
Host	Rabbit
Isotype	IgG
Purification	Affinity purification
Conjugation	Unconjugated
Buffer	Phosphate buffered solution, pH 7.4, containing 0.05% stabilizer, 0.5% protein protectant and 50% glycerol.

Applications

Applications	Recommended Dilution
WB	1:500-2000
IHC	1:50-300
IF	1:50-300

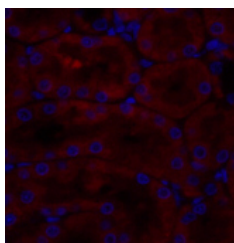
Data



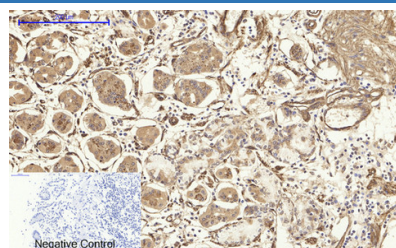
Western Blot analysis of various cells using CAV1 Polyclonal Antibody at dilution of 1:1000.

Observed-MW:25 kDa

Calculated-MW:20 kDa



Immunofluorescence analysis of Rat kidney tissue using CAV1 Polyclonal Antibody at dilution of 1:200.



Immunohistochemistry of paraffin-embedded Human stomach tissue using CAV1 Polyclonal Antibody at dilution of 1:200.

Preparation & Storage

Storage	Store at -20°C Valid for 12 months. Avoid freeze / thaw cycles.
Shipping	The product is shipped with ice pack, upon receipt, store it immediately at the temperature recommended.

Background

For Research Use Only

May act as a scaffolding protein within caveolar membranes. Interacts directly with G-protein alpha subunits and can functionally regulate their activity (By similarity). Involved in the costimulatory signal essential for T-cell receptor (TCR)-mediated T-cell activation. Its binding to DPP4 induces T-cell proliferation and NF-kappa-B activation in a T-cell receptor/CD3-dependent manner. Recruits CTNNB1 to caveolar membranes and may regulate CTNNB1-mediated signaling through the Wnt pathway.