

## Phospho-STAT6 (Tyr641) Polyclonal Antibody

catalog number: E-AB-20986

**Note:** Centrifuge before opening to ensure complete recovery of vial contents.

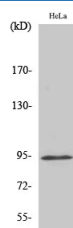
### Description

<b>Reactivity</b>	Human;Mouse;Rat
<b>Immunogen</b>	Synthesized peptide derived from human Stat6 around the phosphorylation site of Tyr641
<b>Host</b>	Rabbit
<b>Isotype</b>	IgG
<b>Purification</b>	Affinity purification
<b>Buffer</b>	Phosphate buffered solution, pH 7.4, containing 0.05% stabilizer, 0.5% protein protectant and 50% glycerol.

### Applications

Applications	Recommended Dilution
<b>WB</b>	1:500-1:2000
<b>IHC</b>	1:100-1:300

### Data



Western Blot analysis of Hela cells with Phospho-Stat6  
(Tyr641) Polyclonal Antibody

**Observed-MW:94 kDa**

**Calculated-MW:94 kDa**

### Preparation & Storage

<b>Storage</b>	Store at -20°C Valid for 12 months. Avoid freeze / thaw cycles.
<b>Shipping</b>	The product is shipped with ice pack,upon receipt,store it immediately at the temperature recommended.

### Background

Carries out a dual function: signal transduction and activation of transcription. Involved in interleukin-4 signalling.

### For Research Use Only