

GTF2F1 Polyclonal Antibody

catalog number: E-AB-61788

Note: Centrifuge before opening to ensure complete recovery of vial contents.

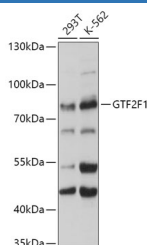
Description

Reactivity	Human;Rat
Immunogen	Recombinant fusion protein of human GTF2F1
Host	Rabbit
Isotype	IgG
Purification	Affinity purification
Buffer	Phosphate buffered solution, pH 7.4, containing 0.05% stabilizer and 50% glycerol.

Applications

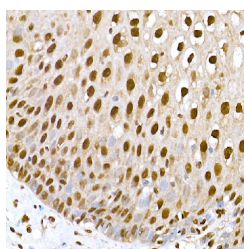
Applications	Recommended Dilution
WB	1:500-1:2000
IHC	1:50-1:200

Data

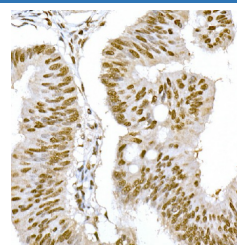


Western blot analysis of extracts of various cell lines using GTF2F1 Polyclonal Antibody at 1:500 dilution.

Observed-MV:74 kDa
Calculated-MV:58 kDa



Immunohistochemistry of paraffin-embedded human esophagus using GTF2F1 Polyclonal antibody at dilution of 1:150 (40x lens). Perform high pressure antigen retrieval with 10 mM citrate buffer pH 6.0 before commencing with IHC staining protocol.



Immunohistochemistry of paraffin-embedded human colon carcinoma using GTF2F1 Polyclonal Antibody at dilution of 1:150 (40x lens). Perform high pressure antigen retrieval with 10 mM citrate buffer pH 6.0 before commencing with IHC staining protocol.

Preparation & Storage

Storage	Store at -20°C Valid for 12 months. Avoid freeze / thaw cycles.
Shipping	The product is shipped with ice pack, upon receipt, store it immediately at the temperature recommended.

Background

For Research Use Only

TFIIF is a general transcription initiation factor that binds to RNA polymerase II and helps to recruit it to the initiation complex in collaboration with TFIIB. It promotes transcription elongation.