

## MHC class I Monoclonal Antibody(W6/32)

catalog number: E-AB-48031

**Note:** Centrifuge before opening to ensure complete recovery of vial contents.

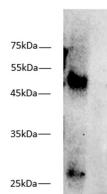
### Description

<b>Reactivity</b>	Mouse
<b>Immunogen</b>	Membrane of human tonsil cells
<b>Host</b>	Mouse
<b>Isotype</b>	IgG2a
<b>Clone</b>	W6/32
<b>Purification</b>	Protein A/G Purification
<b>Buffer</b>	PBS with 0.05% Proclin300, 1% protective protein and 50% glycerol, pH7.4

### Applications Recommended Dilution

<b>WB</b>	1:1000-2000
-----------	-------------

### Data



Western blot of mouse spleen lysates with anti-MHC I antibody at dilution of 1:1000.

**Observed-MW:44 kDa**

**Calculated-MW:40 kDa**

### Preparation & Storage

<b>Storage</b>	Store at -20°C Valid for 12 months. Avoid freeze / thaw cycles.
<b>Shipping</b>	The product is shipped with ice pack, upon receipt, store it immediately at the temperature recommended.

### Background

MHC class I Antibody (W6/32) is a high quality monoclonal MHC class I antibody (also designated MHC antibody, MHC class 1 antibody, HLA-A (Major Histocompatibility Complex, Class 1a) antibody, HLA-B (Major Histocompatibility Complex, Class 1b) antibody, HLA-C (Major Histocompatibility Complex, Class 1c) antibody, MHC class 1 heterodimer receptor heavy chain component antibody, or MHC class I cell surface receptor antibody) suitable for the detection of the MHC class I protein of human origin.

### For Research Use Only