

Recombinant Human CRHBP Protein (His Tag)

Catalog Number: PKSH032283

Note: Centrifuge before opening to ensure complete recovery of vial contents.

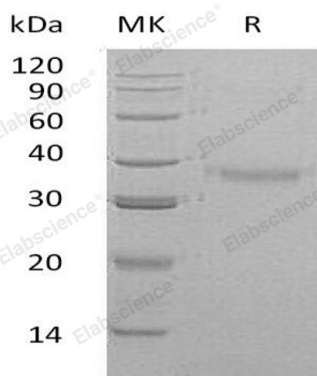
Description

Species	Human
Source	HEK293 Cells-derived Human CRHBP protein Tyr25-Leu322, with an C-terminal His
Calculated MW	34.4 kDa
Observed MW	37 kDa
Accession	P24387
Bio-activity	Not validated for activity

Properties

Purity	> 95 % as determined by reducing SDS-PAGE.
Endotoxin	< 1.0 EU per µg of the protein as determined by the LAL method.
Storage	Generally, lyophilized proteins are stable for up to 12 months when stored at -20 to -80°C. Reconstituted protein solution can be stored at 4-8°C for 2-7 days. Aliquots of reconstituted samples are stable at < -20°C for 3 months.
Shipping	This product is provided as lyophilized powder which is shipped with ice packs.
Formulation	Lyophilized from a 0.2 µm filtered solution of 20mM Tris-HCl, 150mM NaCl, pH 7.5. Normally 5% - 8% trehalose, mannitol and 0.01% Tween 80 are added as protectants before lyophilization. Please refer to the specific buffer information in the printed manual.
Reconstitution	Please refer to the printed manual for detailed information.

Data



> 95 % as determined by reducing SDS-PAGE.

Background

Corticotropin-Releasing Factor-Binding Protein (CRHBP) is a 37 kDa secreted glycoprotein that binds both CRH and urocortin in a 42 kDa extracellular complex. The molecule is approximately 300 amino acids in length and demonstrates five intrachain disulfide bonds. Difference between CRHBP from different species exist, human CRHBP is found in plasma while rodent and sheep CRHBP is limited to neuroendocrine tissues. CRHBP may inactivate CRH and may prevent inappropriate pituitary-adrenal stimulation in pregnancy. CRHBP is presumed to either sequester CRH, rendering it unavailable to cells or transport it to target tissues. Although CRF-BP concentration in the human peripheral circulation is normally low, it increases throughout pregnancy and fall back rapidly after parturition.

For Research Use Only

Toll-free: 1-888-852-8623
Web: www.elabscience.com

Tel: 1-832-243-6086
Email: techsupport@elabscience.com

Fax: 1-832-243-6017