

PE/Elab Fluor® 594 Anti-Mouse CD11a Antibody[FD441.8]

Catalog Number: E-AB-F1033UP

Note: Centrifuge before opening to ensure complete recovery of vial contents.

Description

Reactivity	Mouse
Host	Rat
Isotype	Rat IgG2b, κ
Clone No.	FD441.8
Isotype Control	PE/Elab Fluor® 594 Rat IgG2b, κ Isotype Control[LTF-2] [Product E-AB-F09843P]
Conjugation	PE/Elab Fluor® 594
Conjugation Information	PE/Elab Fluor® 594 is designed to be excited by the blue (488 nm), Green (532 nm) and yellow-green (561 nm) lasers and detected using an optical filter centered near 620 nm (e.g., a 610/20 nm bandpass filter).
Storage Buffer	Phosphate buffered solution, pH 7.2, containing 0.09% stabilizer and 1% protein protectant.

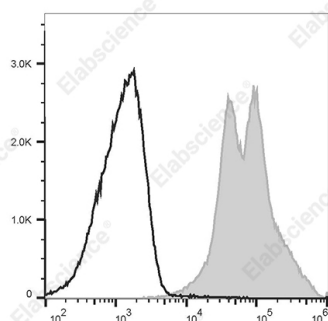
Applications

Recommended usage

FCM

Each lot of this antibody is quality control tested by flow cytometric analysis. Please check your vial before the experiment. Since applications vary, the appropriate dilutions must be determined for individual use. We suggest each investigator should titrate the reagent to obtain optimal results [The recommended concentration is 0.1-1 $\mu\text{g}/10^6$ cells in 100 μL volume].

Data



C57BL/6 murine splenocytes are stained with PE/Elab Fluor

® 594 Anti-Mouse CD11a Antibody[FD441.8] (filled gray histogram) or PE/Elab Fluor® 594 Rat IgG2b, κ Isotype Control (empty black histogram).

Preparation & Storage

Storage

Keep as concentrated solution.

This product can be stored at 2-8°C for 12 months. Please protected from prolonged exposure to light and do not freeze.

Shipping

Ice bag

Antigen Information

Alternate Names

CD11 antigen-like family member A;CD11a;Integrin alpha-L;Itgal;LFA-1A;Ly-15; Lymphocyte antigen 15

For Research Use Only

Toll-free: 1-888-852-8623
Web: www.elabscience.com

Tel: 1-832-243-6086
Email: techsupport@elabscience.com

Fax: 1-832-243-6017

Rev. V1.6

Uniprot ID

P24063

Gene ID

16408

Background

CD11a is a 180 kD glycoprotein, also known as α L integrin, LFA-1 α , Ly-15, or Ly-21. It is a member of the integrin family, primarily expressed on lymphocytes, monocytes/macrophages, and granulocytes. In association with CD18, the CD11a/CD18 complex forms LFA-1. CD11a plays an important role in intercellular adhesion and costimulation by binding its ligands, ICAM-1 (CD54), ICAM-2 (CD102), and ICAM-3 (CD50).

For Research Use Only