

BMP2 Polyclonal Antibody

catalog number: **E-AB-70111**

Note: Centrifuge before opening to ensure complete recovery of vial contents.

Description

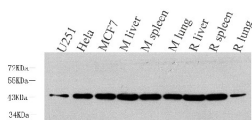
Reactivity	Human;Mouse;Rat
Immunogen	KLH conjugated Synthetic peptide corresponding to Mouse BMP2
Host	Rabbit
Isotype	IgG
Purification	Affinity purification
Buffer	Phosphate buffered solution, pH 7.4, containing 0.05% stabilizer, 1% protein protectant and 50% glycerol.

Applications

Recommended Dilution

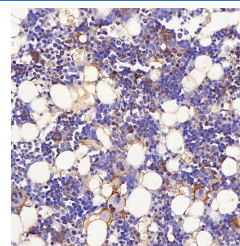
WB	1:500-1:2000
IHC	1:200-1:800

Data



Western Blot analysis of various samples using BMP2 Polyclonal Antibody at dilution of 1:1000.

Observed-MW:45 kDa
Calculated-MW:45 kDa



Immunohistochemistry analysis of paraffin-embedded mouse bone marrow using BMP2 Polyclonal Antibody at dilution of 1:300.

Preparation & Storage

Storage	Store at -20°C Valid for 12 months. Avoid freeze / thaw cycles.
Shipping	The product is shipped with ice pack, upon receipt, store it immediately at the temperature recommended.

Background

Bone morphogenetic protein-2 (BMP-2) is a member of the transforming growth factor-beta (TGFB) superfamily. BMP2 is synthesized as a 60 kDa precursor that is processed in the secretory pathway to a small 18 kDa monomer; 2 monomers then associate to form the active 30 kDa homodimer, which binds to its receptor. There is also a 40-45 kDa form of BMP2, as an amino-terminal propeptide. BMP2 can induce bone formation and regeneration during early embryonic development. It is involved in the hedgehog pathway, TGF beta signaling pathway, and cytokine-cytokine receptor interaction.

For Research Use Only