

AASDHPPT Polyclonal Antibody

Catalog Number:E-AB-14456



Note: Centrifuge before opening to ensure complete recovery of vial contents.

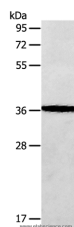
Description

Reactivity	Human,Mouse,Rat
Immunogen	Recombinant protein of human AASDHPPT
Host	Rabbit
Isotype	IgG
Purification	Affinity purification
Conjugation	Unconjugated
Formulation	PBS with 0.05% sodium azide and 50% glycerol, PH7.4

Applications Recommended Dilution

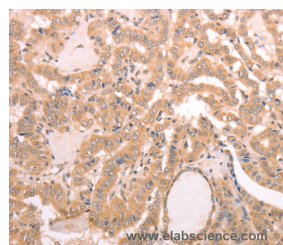
WB	1:500-1:2000
IHC	1:50-1:200

Data

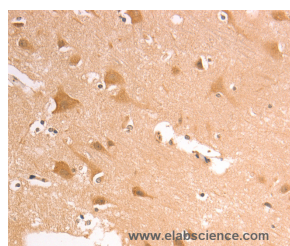


Western Blot analysis of Human fetal brain tissue using AASDHPPT Polyclonal Antibody at dilution of 1:650

Calculated Mw:36kDa



Immunohistochemistry of paraffin-embedded Human thyroid cancer using AASDHPPT Polyclonal Antibody at dilution of 1:30



Immunohistochemistry of paraffin-embedded Human brain using AASDHPPT Polyclonal Antibody at dilution of 1:30

Preparation & Storage

Storage Store at -20°C. Avoid freeze / thaw cycles.

Background

The protein encoded by this gene is similar to *Saccharomyces cerevisiae* LYS5, which is required for the activation of the alpha-aminoacidate dehydrogenase in the biosynthetic pathway of lysine. Yeast alpha-aminoacidate dehydrogenase converts alpha-biosynthetic-aminoacidate semialdehyde to alpha-aminoacidate. It has been suggested that defects in the

For Research Use Only

A Reliable Research Partner in Life Science and Medicine

Toll-free: 1-888-852-8623

Web: www.elabscience.com

Tel: 1-832-243-6086

Email: techsupport@elabscience.com

Fax: 1-832-243-6017

AASDHPPT Polyclonal Antibody

Catalog Number:E-AB-14456



human gene result in pipecolic acidemia.

For Research Use Only

A Reliable Research Partner in Life Science and Medicine

Toll-free: 1-888-852-8623

Tel: 1-832-243-6086

Fax: 1-832-243-6017

Web: www.elabscience.com

Email: techsupport@elabscience.com