

Recombinant Human MIF Protein

Catalog Number:PKSH032727



Note: Centrifuge before opening to ensure complete recovery of vial contents.

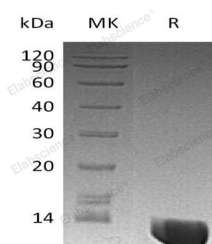
Description

Synonyms	Macrophage migration inhibitory factor;MIF;MMIF;Glycosylation-inhibiting factor;GLIF;L-dopachrome tautomerase;Phenylpyruvate tautomerase
Species	Human
Expression Host	E.coli
Sequence	Met 1-Ala115
Accession	P14174
Calculated Molecular Weight	13.3 kDa
Observed molecular weight	15 kDa
Tag	C-His

Properties

Purity	> 98 % as determined by reducing SDS-PAGE.
Endotoxin	< 0.1 EU per µg of the protein as determined by the LAL method.
Storage	Generally, lyophilized proteins are stable for up to 12 months when stored at -20 to -80°C. Reconstituted protein solution can be stored at 4-8°C for 2-7 days. Aliquots of reconstituted samples are stable at < -20°C for 3 months.
Shipping	This product is provided as lyophilized powder which is shipped with ice packs.
Formulation	Lyophilized from sterile PBS,pH 8.0. Normally 5 % - 8 % trehalose, mannitol and 0.01 % Tween80 are added as protectants before lyophilization. Please refer to the specific buffer information in the printed manual.
Reconstitution	Please refer to the printed manual for detailed information.

Data



> 98 % as determined by reducing SDS-PAGE.

Background

Human MIF is a 12.5 kDa, 115 amino acid (aa) nonglycosylated polypeptide that is synthesized without asignal sequence .Secretion occurs nonclassically via an ABCA1 transporter.Pro-inflammatory cytokine.Involved in the innate immune response to bacterial pathogens. The expression of MIF at sites ofinflammation suggests a role as mediator in regulating the function of acrophages in host defense.Counteracts the anti-inflammatory activity of glucocorticoids. Has phenylpyruvate tautomerase anddopachrome tautomerase activity (in vitro), but the physiological substrate is not known. It is not clearwhether the tautomerase activity has any physiological relevance, and whether it is important for cytokineactivity.

For Research Use Only

A Reliable Research Partner in Life Science and Medicine

Toll-free: 1-888-852-8623

Web: www.elabscience.com

Tel: 1-832-243-6086

Email: techsupport@elabscience.com

Fax: 1-832-243-6017