

# PTCH1 Polyclonal Antibody

Catalog Number: E-AB-62186



**Note:** Centrifuge before opening to ensure complete recovery of vial contents.

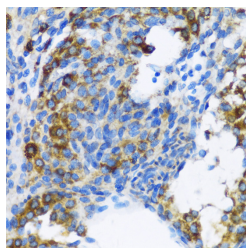
## Description

|                     |                                                          |
|---------------------|----------------------------------------------------------|
| <b>Reactivity</b>   | Human, Mouse, Rat                                        |
| <b>Immunogen</b>    | Recombinant fusion protein of human PTCH1 (NP_000255.2). |
| <b>Host</b>         | Rabbit                                                   |
| <b>Isotype</b>      | IgG                                                      |
| <b>Purification</b> | Affinity purification                                    |
| <b>Conjugation</b>  | Unconjugated                                             |
| <b>Formulation</b>  | PBS with 0.02% sodium azide, 50% glycerol, pH7.3.        |

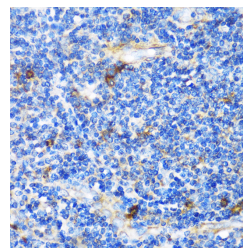
## Applications Recommended Dilution

|            |            |
|------------|------------|
| <b>IHC</b> | 1:50-1:100 |
| <b>IF</b>  | 1:50-1:100 |

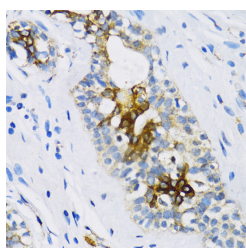
## Data



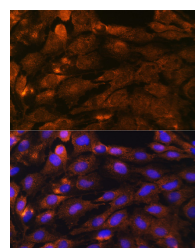
Immunohistochemistry of paraffin-embedded Rat ovary using PTCH1 Polyclonal Antibody at dilution of 1:100 (40x lens).



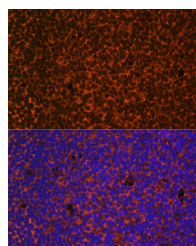
Immunohistochemistry of paraffin-embedded Human tonsil using PTCH1 Polyclonal Antibody at dilution of 1:100 (40x lens).



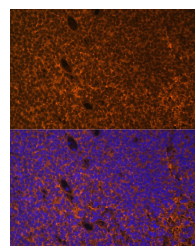
Immunohistochemistry of paraffin-embedded Human breast using PTCH1 Polyclonal Antibody at dilution of 1:100 (40x lens).



Immunofluorescence analysis of C6 cells using PTCH1 Polyclonal Antibody at dilution of 1:100. Blue: DAPI for nuclear staining.



Immunofluorescence analysis of Mouse embryos cells using PTCH1 Polyclonal Antibody at dilution of



Immunofluorescence analysis of Mouse embryos cells using PTCH1 Polyclonal Antibody at dilution of

## For Research Use Only

A Reliable Research Partner in Life Science and Medicine

Toll-free: 1-888-852-8623

Web: [www.elabscience.com](http://www.elabscience.com)

Tel: 1-832-243-6086

Email: [techsupport@elabscience.com](mailto:techsupport@elabscience.com)

Fax: 1-832-243-6017

# PTCH1 Polyclonal Antibody

Catalog Number: E-AB-62186



1:100. Blue: DAPI for nuclear staining.

1:100. Blue: DAPI for nuclear staining.

## Preparation & Storage

**Storage** Store at -20°C. Avoid freeze / thaw cycles.

## Background

This gene encodes a member of the patched gene family. The encoded protein is the receptor for sonic hedgehog, a secreted molecule implicated in the formation of embryonic structures and in tumorigenesis, as well as the desert hedgehog and indian hedgehog proteins. This gene functions as a tumor suppressor. Mutations of this gene have been associated with basal cell nevus syndrome, esophageal squamous cell carcinoma, trichoepitheliomas, transitional cell carcinomas of the bladder, as well as holoprosencephaly. Alternative splicing results in multiple transcript variants encoding different isoforms. Additional splice variants have been described, but their full length sequences and biological validity cannot be determined currently.

## For Research Use Only

A Reliable Research Partner in Life Science and Medicine

Toll-free: 1-888-852-8623

Tel: 1-832-243-6086

Fax: 1-832-243-6017

Web: [www.elabscience.com](http://www.elabscience.com)

Email: [techsupport@elabscience.com](mailto:techsupport@elabscience.com)