

PE/Cyanine 5 Anti-Human CD21 Antibody[HB5]

Catalog Number: E-AB-F1377G

Note: Centrifuge before opening to ensure complete recovery of vial contents.

Description

Reactivity	Human
Host	Mouse
Isotype	Mouse IgG2a, κ
Clone No.	HB5
Isotype Control	PE/Cyanine5 Mouse IgG2a, κ Isotype Control[C1.18.4] [Product E-AB-F09802G]
Conjugation	PE/Cyanine 5
Conjugation Information	PE/Cyanine 5 is designed to be excited by the Blue (488 nm), Green (532 nm) and yellow-green (561 nm) lasers and detected using an optical filter centered near 670 nm (e.g., a 690/50 nm bandpass filter).
Storage Buffer	Phosphate buffered solution, pH 7.2, containing 0.09% stabilizer.

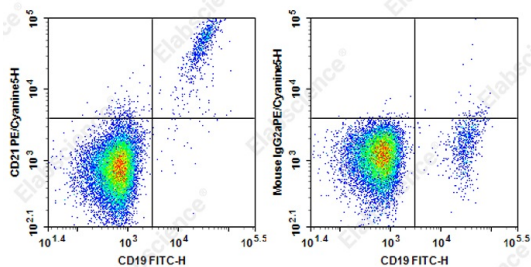
Applications

FCM

Recommended usage

Each lot of this antibody is quality control tested by flow cytometric analysis. **The amount of the reagent is suggested to be used 5 μL of antibody per test (million cells in 100 μL staining volume or per 100 μL of whole blood).** Please check your vial before the experiment. Since applications vary, the appropriate dilutions must be determined for individual use.

Data



Staining of normal human peripheral blood cells with FITC Anti-Human CD19 Antibody and PE/Cyanine5 Anti-Human CD21 Antibody[HB5] (left) or PE/Cyanine5 Mouse IgG2a Isotype Control (right). Cells in the lymphocytes gate were used for analysis.

Preparation & Storage

Storage	Keep as concentrated solution. This product can be stored at 2-8°C for 24 months. Please protected from prolonged exposure to light and do not freeze.
Shipping	Ice bag

Antigen Information

Alternate Names	Complement receptor type 2;CR2;Cr2;Complement C3d receptor;Epstein-Barr virus receptor;EBV receptor;CD21
------------------------	--

For Research Use Only

Uniprot ID

P20023

Gene ID

1380

Background

CD21 is a 145 kD transmembrane protein also known as complement C3d receptor (C3dR), complement receptor 2 (CR2), and Epstein-Barr virus receptor. CD21 is expressed on B cells, follicular dendritic cells, subsets of normal thymocytes and T cells, and some epithelial cells. CD21 is the receptor used by Epstein-Barr virus to infect B cells and is also the complement receptor for C3d. CD21 has also been shown to interact with a number of proteins, including CD23, CD19, annexin VI, CD81, iC3b, complement receptor 1 (CR1, CD35), and interferon-alpha 1 (IFN- α 1).