

KCNU1 Polyclonal Antibody

catalog number: E-AB-18173

Note: Centrifuge before opening to ensure complete recovery of vial contents.

Description

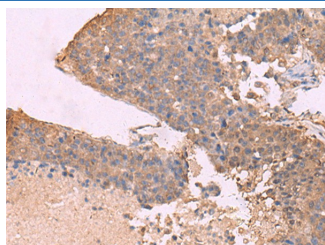
Reactivity	Human
Immunogen	Synthetic peptide of human KCNU1
Host	Rabbit
Isotype	IgG
Purification	Antigen affinity purification
Conjugation	Unconjugated
Buffer	Phosphate buffered solution, pH 7.4, containing 0.05% stabilizer and 50% glycerol.

Applications

Recommended Dilution

IHC	1:50-1:300
-----	------------

Data



Immunohistochemistry of paraffin-embedded Human liver cancer tissue using KCNU1 Polyclonal Antibody at dilution of 1:45(×200)

Preparation & Storage

Storage	Store at -20°C Valid for 12 months. Avoid freeze / thaw cycles.
Shipping	The product is shipped with ice pack, upon receipt, store it immediately at the temperature recommended.

Background

This gene encodes a member of the potassium channel family of proteins. The encoded voltage-gated ion channel allows the outward flow of potassium ions during plasma membrane hyperpolarization in sperm. Opening of this channel may be regulated by calcium ion levels. Homozygous knockout mice that lack the related mouse gene exhibit male sterility. Alternative splicing results in multiple transcript variants.