

## Elab Fluor® 700 Anti-Mouse CD22 Antibody[Cy34.1]

Catalog Number: E-AB-F1021UM1

**Note:** Centrifuge before opening to ensure complete recovery of vial contents.

### Description

<b>Reactivity</b>	Mouse
<b>Host</b>	Mouse
<b>Isotype</b>	Mouse IgG1, κ
<b>Clone No.</b>	Cy34.1
<b>Isotype Control</b>	Elab Fluor® 700 Mouse IgG1, κ Isotype Control[MOPC-21] [Product E-AB-F09793M1]
<b>Conjugation</b>	Elab Fluor® 700
<b>Conjugation Information</b>	Elab Fluor® 700 is designed to be excited by the Red laser (627-640 nm) and detected using an optical filter centered near 719 nm (e.g., a 725/40 nm bandpass filter).
<b>Storage Buffer</b>	Phosphate buffered solution, pH 7.2, containing 0.09% sodium azide and 1% BSA.

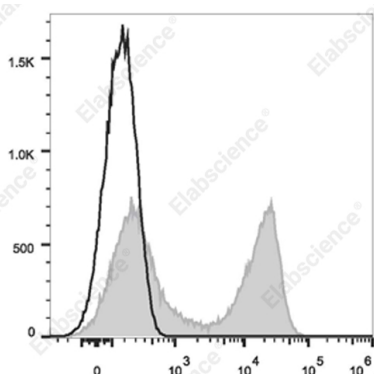
### Applications

### Recommended usage

#### FCM

Each lot of this antibody is quality control tested by flow cytometric analysis. Please check your vial before the experiment. Since applications vary, the appropriate dilutions must be determined for individual use. We suggest each investigator should titrate the reagent to obtain optimal results [The recommended concentration is 0.1-1 µg/10<sup>6</sup> cells in 100 µL volume].

### Data



Staining of C57BL/6 murine splenocytes cells with Elab Fluor

® 700 Anti-Mouse CD22 Antibody[Cy34.1](filled gray

histogram) or Elab Fluor® 700 Mouse IgG1,κ Isotype Control (empty black histogram). Total viable cells were used for analysis.

### Preparation & Storage

<b>Storage</b>	Keep as concentrated solution. This product can be stored at 2-8°C for 12 months. Please protected from prolonged exposure to light and do not freeze.
<b>Shipping</b>	Ice bag

### Antigen Information

<b>Alternate Names</b>	Siglec2;B-cell receptor CD22;B-lymphocyte cell adhesion molecule;BL-CAM;CD22; Cd22;Lyb-8;Sialic acid-binding Ig-like lectin 2;Siglec-2;T-cell surface antigen Leu-14
<b>Uniprot ID</b>	P35329

### For Research Use Only

**Gene ID**

12483

**Background**

The Cy34.1 monoclonal antibody specifically binds to the B-lymphocyte differentiation antigen CD22 on strains having the Lyb-8.2 alloantigen (e.g., A, BALB/c, CBA, C3H/He, C57BL, C57L, C58, SJL, SWR, but not AKR, DBA/1, DBA/2, NZB, PL). CD22 is expressed at high levels on mature peripheral B lymphocytes (follicular and marginal zone), B-1 cells (CD5+ B cells), and plasma cells. It is a member of the Ig gene superfamily and associates with the B-cell antigen receptor. Its sialic acid-binding immunoglobulin-like lectin (siglec) extracellular region mediates B-cell adhesion to ligands on endothelial cells in the bone marrow. Its intracellular domain is phosphorylated after cross-linking of antigen receptor or MHC class II antigen. It is involved in negative regulation of B-cell activation and protection from autoimmunity. B-cell proliferative responses to LPS or anti-mouse Ig  $\mu$  chain are augmented in the presence of Cy34.1 mAb.