

## Lamin B1 Monoclonal Antibody

catalog number: E-AB-20076

**Note:** Centrifuge before opening to ensure complete recovery of vial contents.

### Description

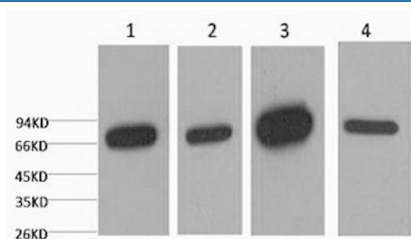
<b>Reactivity</b>	Human;Mouse;Rat
<b>Immunogen</b>	Recombinant Protein
<b>Host</b>	Mouse
<b>Isotype</b>	IgG
<b>Clone</b>	4K2
<b>Purification</b>	Protein A purification
<b>Conjugation</b>	Unconjugated
<b>Buffer</b>	Phosphate buffered solution, pH 7.4, containing 0.05% stabilizer, 0.5% protein protectant and 50% glycerol.

### Applications

### Recommended Dilution

<b>WB</b>	1:500-1:2000
<b>IHC</b>	1:50-300
<b>IF</b>	1:50-1:200
<b>IP</b>	1:100-1:300

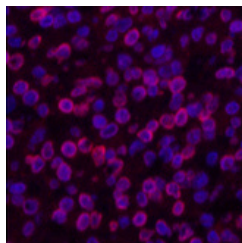
### Data



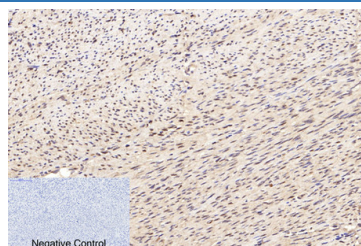
Western Blot analysis of 1) HepG2, 2) 293T, 3) Mouse brain, 4) Rat brain using Lamin B1 Monoclonal Antibody at dilution of 1:5000.

**Observed-MW:68 kDa**

**Calculated-MW:66 kDa**



Immunofluorescence analysis of Human lung cancer tissue using Lamin B1 Monoclonal Antibody at dilution of 1:200.



Immunohistochemistry of paraffin-embedded Human uterus tissue using Lamin B1 Monoclonal Antibody at dilution of 1:200.

### Preparation & Storage

**Storage** Store at -20°C Valid for 12 months. Avoid freeze / thaw cycles.

### For Research Use Only

## Shipping

The product is shipped with ice pack, upon receipt, store it immediately at the temperature recommended.

## Background

Lamins are components of the nuclear lamina, a fibrous layer on the nucleoplasmic side of the inner nuclear membrane, which is thought to provide a framework for the nuclear envelope and may also interact with chromatin.