

APC Anti-Mouse CD16/32 Antibody[2.4G2]

Catalog Number: E-AB-F0997UE

Note: Centrifuge before opening to ensure complete recovery of vial contents.

Description

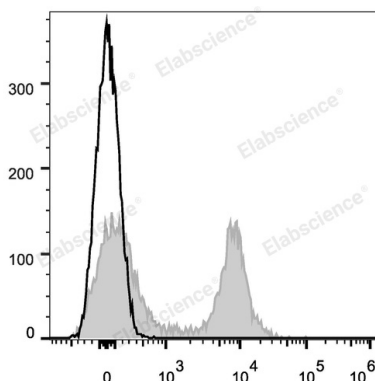
Reactivity	Mouse
Host	Rat
Isotype	Rat IgG2b, κ
Clone No.	2.4G2
Isotype Control	APC Rat IgG2b, κ Isotype Control[LTF-2] [Product E-AB-F09843E]
Conjugation	APC
Conjugation Information	APC is designed to be excited by the Red (627-640 nm) laser and detected using an optical filter centered near 660 nm (e.g., a 660/20 nm bandpass filter).
Storage Buffer	Phosphate buffered solution, pH 7.2, containing 0.09% sodium azide and 1% BSA.

Applications

Recommended usage

FCM	Each lot of this antibody is quality control tested by flow cytometric analysis. Please check your vial before the experiment. Since applications vary, the appropriate dilutions must be determined for individual use. We suggest each investigator should titrate the reagent to obtain optimal results [The recommended concentration is 0.1-1 μg/10 ⁶ cells in 100 μL volume].
------------	--

Data



C57BL/6 murine splenocytes are stained with APC Anti-Mouse CD16/32 Antibody (filled gray histogram). Unstained splenocytes (empty black histogram) are used as control.

Preparation & Storage

Storage	Keep as concentrated solution. This product can be stored at 2-8°C for 12 months. Please protected from prolonged exposure to light and do not freeze.
Shipping	Ice bag

Antigen Information

Alternate Names	CD16a/b;CD32;CD32A/B;FCG2A;FCGR2A/BFCGR3;FCGR3A/B;Fc fragment of IgG low affinity IIIa/b receptor;Fc fragment of IgG low affinity IIIb receptor;Fc fragment of IgG low affinity IIa/b receptor;Fc gamma RIla/bFc gamma receptor III A/B;FcGR
Uniprot ID	P08508;P08101
Gene ID	14130,14131

For Research Use Only

Background

CD16 is low affinity IgG Fc receptor III (FcR III) and CD32 is FcR II. CD16/CD32 are expressed on B cells, monocytes/macrophages, NK cells, granulocytes, mast cells, and dendritic cells. The Fc receptors bind antibody-antigen immune complexes and mediate adaptive immune responses.