

Note: Centrifuge before opening to ensure complete recovery of vial contents.

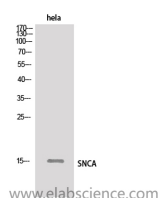
Description

Reactivity	Human, Mouse, Rat
Immunogen	Synthesized peptide derived from the Internal region of human Synuclein- α .
Host	Rabbit
Isotype	IgG
Purification	Affinity purification
Formulation	PBS with 0.02% sodium azide, 0.5% protective protein and 50% glycerol pH 7.4.

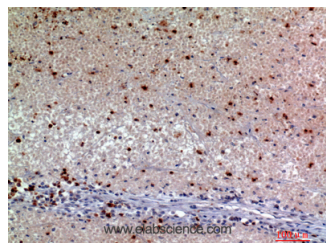
Applications Recommended Dilution

WB	1:500-1:2000
IHC	1:100-1:300
ELISA	1:10000

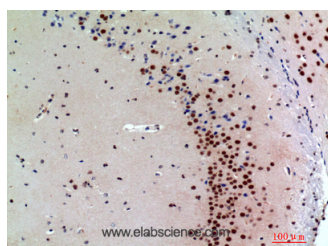
Data



Western Blot analysis of HeLa cells using SNCA Polyclonal Antibody.
Observed Mw: 15kDa
Calculated Mw: 14kDa



Immunohistochemistry of paraffin-embedded Human kidney cancer tissue using SNCA Polyclonal Antibody at dilution of 1:200.



Immunohistochemistry of paraffin-embedded Mouse brain tissue using SNCA Polyclonal Antibody at dilution of 1:200.

Preparation & Storage

Storage Store at -20°C. Avoid freeze / thaw cycles.

Background

Alpha-synuclein is a member of the synuclein family, which also includes beta- and gamma-synuclein. Synucleins are abundantly expressed in the brain and alpha- and beta-synuclein inhibit phospholipase D2 selectively. SNCA may serve to integrate presynaptic signaling and membrane trafficking. Defects in SNCA have been implicated in the pathogenesis of

For Research Use Only

A Reliable Research Partner in Life Science and Medicine

Toll-free: 1-888-852-8623

Web: www.elabscience.com

Tel: 1-832-243-6086

Email: techsupport@elabscience.com

Fax: 1-832-243-6017

SNCA Polyclonal Antibody

Catalog Number: E-AB-36111

2 Publications



Parkinson disease. SNCA peptides are a major component of amyloid plaques in the brains of patients with Alzheimer's disease. Four alternatively spliced transcripts encoding two different isoforms have been identified for this gene.

For Research Use Only

A Reliable Research Partner in Life Science and Medicine

Toll-free: 1-888-852-8623

Tel: 1-832-243-6086

Fax: 1-832-243-6017

Web: www.elabscience.com

Email: techsupport@elabscience.com