

## PerCP Anti-Human CD3 Antibody[UCHT1]

Catalog Number: E-AB-F1230F

**Note:** Centrifuge before opening to ensure complete recovery of vial contents.

### Description

|                                |   |
|--------------------------------|---|
| <b>Reactivity</b>              | Human   |
| <b>Host</b>                    | Mouse   |
| <b>Isotype</b>                 | Mouse IgG1, κ   |
| <b>Clone No.</b>               | UCHT1   |
| <b>Isotype Control</b>         | PerCP Mouse IgG1, κ Isotype Control[MOPC-21] [Product E-AB-F09792F]   |
| <b>Conjugation</b>             | PerCP   |
| <b>Conjugation Information</b> | PerCP is designed to be excited by the blue laser (488 nm) and detected using an optical filter centered near 675 nm (e.g., a 690/50 nm bandpass filter). |
| <b>Storage Buffer</b>          | Phosphate buffered solution, pH 7.2, containing 0.09% sodium azide and 1% BSA.  |

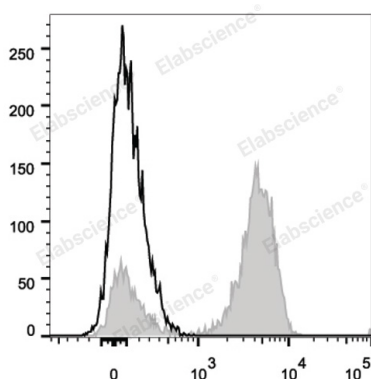
### Applications

### Recommended usage

#### FCM

Each lot of this antibody is quality control tested by flow cytometric analysis. **The amount of the reagent is suggested to be used 5 μL of antibody per test (million cells in 100 μL staining volume or per 100 μL of whole blood).** Please check your vial before the experiment. Since applications vary, the appropriate dilutions must be determined for individual use.

### Data



Human peripheral blood lymphocytes are stained with PerCP Anti-Human CD3 Antibody (filled gray histogram).

### Preparation & Storage

|                 |   |
|-----------------|---|
| <b>Storage</b>  | Keep as concentrated solution.<br>This product can be stored at 2-8°C for 12 months. Please protected from prolonged exposure to light and do not freeze. |
| <b>Shipping</b> | Ice bag   |

### Antigen Information

|                        |   |
|------------------------|---|
| <b>Alternate Names</b> | CD3E;CD3e;T-cell surface antigen T3/Leu-4 epsilon chain;T-cell surface glycoprotein CD3 epsilon chain;T3E |
| <b>Uniprot ID</b>      | P07766  |
| <b>Gene ID</b>         | 915   |

### For Research Use Only

## Background

CD3 $\epsilon$  is a 20 kD chain of the CD3/T cell receptor (TCR) complex, which is composed of two CD3 $\epsilon$ , one CD3 $\gamma$ , one CD3 $\delta$ , one CD3 $\zeta$  (CD247), and a T cell receptor ( $\alpha/\beta$  or  $\gamma/\delta$ ) heterodimer. It is found on all mature T lymphocytes, NK T cells, and some thymocytes. CD3, also known as T3, is a member of the immunoglobulin superfamily that plays a role in antigen recognition, signal transduction, and T cell activation.