

Recombinant Human CD62L/L-Selectin protein (His tag)



Catalog Number:PDEH100294

Note: Centrifuge before opening to ensure complete recovery of vial contents.

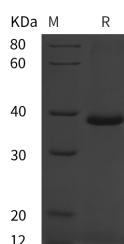
Description

Synonyms	L-selectin;Sell;CD62 antigen-like family member L;Leukocyte adhesion molecule 1 (LAM-1);Leukocyte-endothelial cell adhesion molecule 1;Lymph node homing receptor;Lymphocyte antigen 22 (Ly-22);Lymphocyte surface MEL-14 antigen;CD62L
Species	Human
Expression Host	E.coli
Sequence	Trp 39-Asn 332
Accession	P30836
Calculated Molecular Weight	32.2 kDa
Observed molecular weight	39 kDa
Tag	N-His

Properties

Purity	> 95 % as determined by reducing SDS-PAGE.
Endotoxin	Please contact us for more information.
Storage	Generally, lyophilized proteins are stable for up to 12 months when stored at -20 to -80°C. Reconstituted protein solution can be stored at 4-8°C for 2-7 days. Aliquots of reconstituted samples are stable at < -20°C for 3 months.
Shipping	This product is provided as lyophilized powder which is shipped with ice packs.
Formulation	Lyophilized from sterile PBS, pH 7.4. Normally 5 % - 8 % trehalose, mannitol and 0.01% Tween80 are added as protectants before lyophilization. Please refer to the specific buffer information in the printed manual.
Reconstitution	Please refer to the printed manual for detailed information.

Data



> 95 % as determined by reducing SDS-PAGE.

Background

L-Selectin (also known as Leukocyte Selectin, LAM-1, LECAM-1, LECCAM-1, TQ1, Leu-8, MEL-14 antigen, DREG, lymph node homing receptor, CD62L), a member of the Selectin family, is a cell surface glycoprotein expressed constitutively on a wide variety of leukocytes. Two forms of L?Selectin have been reported, apparently arising as a result of post-translational modifications. The lymphocyte form shows an apparent molecular weight of 74 kDa, while the neutrophil form is 90 - 100 kDa. Human and mouse L?Selectin share 76% amino acid (aa) sequence homology.L?Selectin

For Research Use Only

A Reliable Research Partner in Life Science and Medicine

Toll-free: 1-888-852-8623

Web: www.elabscience.com

Tel: 1-832-243-6086

Email: techsupport@elabscience.com

Fax: 1-832-243-6017

Recombinant Human CD62L/L-Selectin protein (His tag)



Catalog Number: PDEH100294

plays a role in the migration of lymphocytes into peripheral lymph nodes and sites of chronic inflammation, and of neutrophils into acute inflammatory sites. Acting in cooperation with P-Selectin and E-Selectin, L-Selectin mediates the initial interaction of circulating leukocytes with endothelial cells that produces a characteristic "rolling" of the leukocytes on the endothelium. This initial interaction, also involving ICAM-1 and VCAM-1, leads eventually to extravasation of the white blood cell through the blood vessel wall into the extracellular matrix tissue.

For Research Use Only

A Reliable Research Partner in Life Science and Medicine

Toll-free: 1-888-852-8623

Web: www.elabscience.com

Tel: 1-832-243-6086

Email: techsupport@elabscience.com

Fax: 1-832-243-6017