

Laminin alpha5 Polyclonal Antibody

Catalog Number: E-AB-31903

3 Publications



Note: Centrifuge before opening to ensure complete recovery of vial contents.

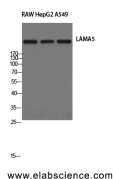
Description

Reactivity	Human, Mouse
Immunogen	Synthesized peptide derived from the Internal region of human Laminin α -5
Host	Rabbit
Isotype	IgG
Purification	Affinity purification
Conjugation	Unconjugated
Formulation	PBS with 0.02% sodium azide, 0.5% protective protein and 50% glycerol, pH7.4

Applications Recommended Dilution

WB	1:500-1:2000
IHC	1:100-1:300
ELISA	1:20000

Data



Western Blot analysis of RAW264.7, HepG2, A549 cells with Laminin alpha5 Polyclonal Antibody

Observed Mw: 400kDa
Calculated Mw: 400kDa

Preparation & Storage

Storage Store at -20°C. Avoid freeze / thaw cycles.

Background

Components of the extracellular matrix exert myriad effects on tissues throughout the body. In particular, the laminins, a family of heterotrimeric extracellular glycoproteins, affect tissue development and integrity in such diverse organs as the kidney, lung, skin, and nervous system. It is thought that laminins mediate the attachment, migration, and organization of cells into tissues during embryonic development by interacting with other extracellular matrix components. Laminins function as heterotrimeric complexes of alpha, beta, and gamma chains, with each chain type representing a different subfamily of proteins. The protein encoded by this gene belongs to the alpha subfamily of laminin chains and is a major component of basement membranes. Two transcript variants encoding different isoforms have been found for this gene, but the full-length nature of one of them has not been determined.

For Research Use Only

A Reliable Research Partner in Life Science and Medicine

Toll-free: 1-888-852-8623

Tel: 1-832-243-6086

Fax: 1-832-243-6017

Web: www.elabscience.com

Email: techsupport@elabscience.com