

Recombinant Human Annexin A2/ANXA2 Protein

Catalog Number:PKSH032074



Note: Centrifuge before opening to ensure complete recovery of vial contents.

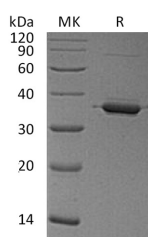
Description

Synonyms	Annexin A2;Annexin II;Annexin-2;Calpactin I Heavy Chain;Calpactin-1 Heavy Chain;Chromobindin-8;Lipocortin II;Placental Anticoagulant Protein IV;PAP-IV;Protein I;p36;ANXA2;ANX2;ANX2L4;CAL1H;LPC2D
Species	Human
Expression Host	E.coli
Sequence	Ser2-Asp339
Accession	P07355
Calculated Molecular Weight	38.6 kDa
Observed molecular weight	35 kDa
Tag	None

Properties

Purity	> 95 % as determined by reducing SDS-PAGE.
Endotoxin	< 1.0 EU per µg of the protein as determined by the LAL method.
Storage	Generally, lyophilized proteins are stable for up to 12 months when stored at -20 to -80°C. Reconstituted protein solution can be stored at 4-8°C for 2-7 days. Aliquots of reconstituted samples are stable at < -20°C for 3 months.
Shipping	This product is provided as lyophilized powder which is shipped with ice packs.
Formulation	Lyophilized from a 0.2 µm filtered solution of 20mM Histidine-HCl, 6% Sucrose, 4% Mannitol, 0.05%Tween 80, pH 5.5. Normally 5 % - 8 % trehalose, mannitol and 0.01% Tween80 are added as protectants before lyophilization. Please refer to the specifi
Reconstitution	Please refer to the printed manual for detailed information.

Data



> 95 % as determined by reducing SDS-PAGE.

Background

Annexin A2 (ANXA2) is a member of the annexin family and has roles in the regulation of cellular growth and in signal transduction pathways. ANXA2 protein is associated with sickle cell osteonecrosis and the expression reduce of ANXA2 is associated with osteosarcoma metastases. ANXA2 functions as an autocrine factor, it can increases osteoclast formation and bone resorption. ANXA2 is involved in muscular dystrophies. In humans, the up-regulation of ANXA2 is related with colon adenocarcinoma cell differentiation.

For Research Use Only

A Reliable Research Partner in Life Science and Medicine

Toll-free: 1-888-852-8623

Web: www.elabscience.com

Tel: 1-832-243-6086

Email: techsupport@elabscience.com

Fax: 1-832-243-6017