

GFRA3 Polyclonal Antibody

catalog number: E-AB-15686

Note: Centrifuge before opening to ensure complete recovery of vial contents.

Description

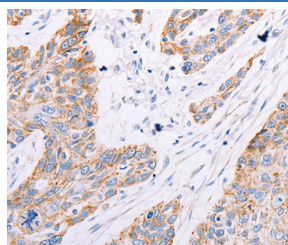
| | |
|---------------------|--|
| Reactivity | Human;Mouse;Rat |
| Immunogen | Synthetic peptide of human GFRA3 |
| Host | Rabbit |
| Isotype | IgG |
| Purification | Affinity purification |
| Conjugation | Unconjugated |
| buffer | Phosphate buffered solution, pH 7.4, containing 0.05% stabilizer and 50% glycerol. |

Applications

Recommended Dilution

| | |
|------------|------------|
| IHC | 1:50-1:150 |
|------------|------------|

Data



Immunohistochemistry of paraffin-embedded Human esophagus cancer tissue using GFRA3 Polyclonal Antibody at dilution 1:60

Preparation & Storage

| | |
|-----------------|--|
| Storage | Store at -20°C Valid for 12 months. Avoid freeze / thaw cycles. |
| Shipping | The product is shipped with ice pack, upon receipt, store it immediately at the temperature recommended. |

Background

GDNF family receptor alpha-3 is a protein that in humans is encoded by the GFRA3 gene. The protein encoded by this gene is a glycosylphosphatidylinositol(GPI)-linked cell surface receptor and a member of the GDNF receptor family. It forms a signaling receptor complex with RET tyrosine kinase receptor and binds the ligand, artemin. Widely expressed in adult and fetus which exhibit a similar pattern. Essentially not expressed in the central nervous system, but highly expressed in several sensory and sympathetic ganglia of the peripheral nervous system. Moderate expression in many non-neuronal tissues, particularly those of the digestive and urogenital systems, but high expression in stomach and appendix. Several types of glandular tissues show low expression.

For Research Use Only