

CD2 Monoclonal Antibody

catalog number: AN200005P

Note: Centrifuge before opening to ensure complete recovery of vial contents.

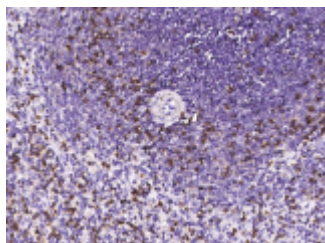
Description

Reactivity	Human
Immunogen	Recombinant Human CD2 protein
Host	Mouse
Isotype	IgG1
Clone	5A6
Purification	Protein A
Buffer	0.2 µm filtered solution in PBS

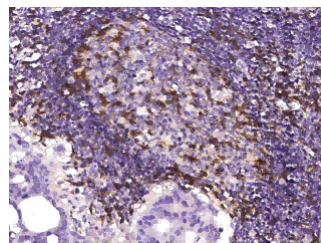
Applications Recommended Dilution

IHC-P	1:100-1:500
--------------	-------------

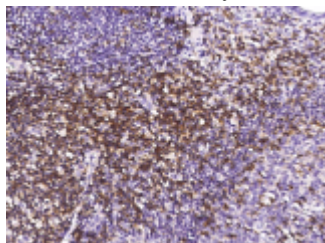
Data



Immunohistochemistry of paraffin-embedded human spleen using CD2 Monoclonal Antibody at dilution of 1:200.



Immunohistochemistry of paraffin-embedded human lymph node using CD2 Monoclonal Antibody at dilution of 1:200.



Immunohistochemistry of paraffin-embedded human appendix using CD2 Monoclonal Antibody at dilution of 1:200.

Preparation & Storage

Storage	This antibody can be stored at 2°C-8°C for one month without detectable loss of activity. Antibody products are stable for twelve months from date of receipt when stored at -20°C to -80°C. Preservative-Free. Avoid repeated freeze-thaw cycles.
Shipping	Ice bag

Background

CD2 is a type I glycoprotein belonging to the Ig superfamily and is expressed on T cells, NK cells, B cells and some antigen presenting cells. Human CD2 binds human CD58 on antigen-presenting cells to induce co-stimulating signals in T cells.

For Research Use Only