

# Recombinant Human PPM1A protein (His tag)

Catalog Number:PDEH100431



**Note:** Centrifuge before opening to ensure complete recovery of vial contents.

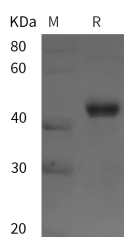
## Description

<b>Synonyms</b>	Protein Phosphatase 1A;Protein Phosphatase 2C Isoform Alpha;PP2C-Alpha;Protein Phosphatase 1A;PPM1A;PPPM1A;PP2C-ALPHA;PP2CA;PP2Calpha
<b>Species</b>	Human
<b>Expression Host</b>	E.coli
<b>Sequence</b>	Gly2-Trp382
<b>Accession</b>	P35813
<b>Calculated Molecular Weight</b>	41.8 kDa
<b>Observed molecular weight</b>	45 kDa
<b>Tag</b>	N-His

## Properties

<b>Purity</b>	> 95 % as determined by reducing SDS-PAGE.
<b>Endotoxin</b>	Please contact us for more information.
<b>Storage</b>	Generally, lyophilized proteins are stable for up to 12 months when stored at -20 to -80°C. Reconstituted protein solution can be stored at 4-8°C for 2-7 days. Aliquots of reconstituted samples are stable at < -20°C for 3 months.
<b>Shipping</b>	This product is provided as lyophilized powder which is shipped with ice packs.
<b>Formulation</b>	Lyophilized from sterile PBS, pH 7.4. Normally 5 % - 8 % trehalose, mannitol and 0.01% Tween80 are added as protectants before lyophilization. Please refer to the specific buffer information in the printed manual.
<b>Reconstitution</b>	Please refer to the printed manual for detailed information.

## Data



> 95 % as determined by reducing SDS-PAGE.

## Background

Protein Phosphatase 1A (PPM1A) is a member of the PP2C family of Ser/Thr protein phosphatases which are known to be negative regulators of cell stress response pathways. PPM1A has a broad specificity. PPM1A negatively regulates the activities of MAP kinases and MAP kinase kinases. Also; it negatively regulates TGF-beta signaling through dephosphorylating SMAD2 and SMAD3; resulting in their dissociation from SMAD4; nuclear export of the SMADs and termination of the TGF-beta-mediated signaling. In addition; PPM1A can dephosphorylate cyclin-dependent kinases; and thus may be involved in cell cycle control.

## For Research Use Only

A Reliable Research Partner in Life Science and Medicine

Toll-free: 1-888-852-8623

Web: [www.elabscience.com](http://www.elabscience.com)

Tel: 1-832-243-6086

Email: [techsupport@elabscience.com](mailto:techsupport@elabscience.com)

Fax: 1-832-243-6017