

# Recombinant Human Ube2L6 Protein (His Tag)

Catalog Number: PKSH033324



**Note:** Centrifuge before opening to ensure complete recovery of vial contents.

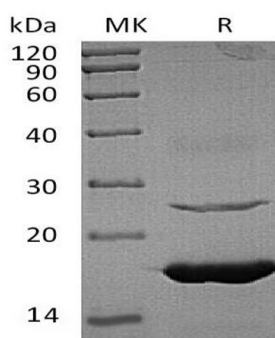
## Description

<b>Species</b>	Human
<b>Mol_Mass</b>	18.8 kDa
<b>Accession</b>	O14933
<b>Bio-activity</b>	Not validated for activity

## Properties

<b>Purity</b>	> 95 % as determined by reducing SDS-PAGE.
<b>Endotoxin</b>	< 1.0 EU per µg of the protein as determined by the LAL method.
<b>Storage</b>	Store at < -20°C, stable for 6 months. Please minimize freeze-thaw cycles.
<b>Shipping</b>	This product is provided as liquid. It is shipped at frozen temperature with blue ice/gel packs. Upon receipt, store it immediately at < - 20°C.
<b>Formulation</b>	Supplied as a 0.2 µm filtered solution of 50mM HEPES, 100mM NaCl, pH 8.0.
<b>Reconstitution</b>	Not Applicable

## Data



> 95 % as determined by reducing SDS-PAGE.

## Background

Ubiquitin/ISG15-Conjugating Enzyme E2 L6 (UBE2L6) is an enzyme member of the E2 ubiquitin-conjugating enzyme family. UBE2L6 plays a same function as UBE2D; it catalyzes the covalent attachment of ubiquitin or ISG15 to other proteins. UBE2L6 promotes ubiquitination and subsequent proteasomal degradation of FLT3. It has functions in the E6/E6-AP-induced ubiquitination of p53/TP53.

## For Research Use Only

A Reliable Research Partner in Life Science and Medicine  
Tel:400-999-2100

Email:[techsupport@elabscience.cn](mailto:techsupport@elabscience.cn)

Web:[www.elabscience.cn](http://www.elabscience.cn)

Rev. V3.2