

# COMT Polyclonal Antibody

catalog number: E-AB-18664

**Note:** Centrifuge before opening to ensure complete recovery of vial contents.

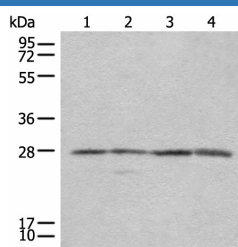
## Description

Reactivity	Human
Immunogen	Fusion protein of human COMT
Host	Rabbit
Isotype	IgG
Purification	Antigen affinity purification
Conjugation	Unconjugated
buffer	Phosphate buffered solution, pH 7.4, containing 0.05% stabilizer and 50% glycerol.

## Applications

WB	1:500-1:2000
IHC	1:25-1:100

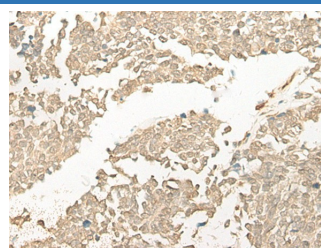
## Data



Western blot analysis of 293T Jurkat and 231 cell lysates using COMT Polyclonal Antibody at dilution of 1:350

**Observed-MV: Refer to figures**

**Calculated-MV: 30 kDa**



Immunohistochemistry of paraffin-embedded Human lung cancer tissue using COMT Polyclonal Antibody at dilution of 1:25(×200)

## Preparation & Storage

Storage	Store at -20°C Valid for 12 months. Avoid freeze / thaw cycles.
Shipping	The product is shipped with ice pack, upon receipt, store it immediately at the temperature recommended.

## Background

Catechol-O-methyltransferase catalyzes the transfer of a methyl group from S-adenosylmethionine to catecholamines, including the neurotransmitters dopamine, epinephrine, and norepinephrine. This O-methylation results in one of the major degradative pathways of the catecholamine transmitters. In addition to its role in the metabolism of endogenous substances, COMT is important in the metabolism of catechol drugs used in the treatment of hypertension, asthma, and Parkinson disease. COMT is found in two forms in tissues, a soluble form (S-COMT) and a membrane-bound form (MB-COMT). The differences between S-COMT and MB-COMT reside within the N-termini. Several transcript variants are formed through the use of alternative translation initiation sites and promoters.

## For Research Use Only