

Recombinant Human 14-3-3 beta/YWHAB Protein (GST Tag)



Catalog Number:PKSH031394

Note: Centrifuge before opening to ensure complete recovery of vial contents.

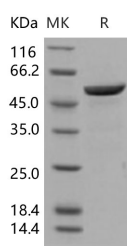
Description

Synonyms	GW128;HEL-S-1;HS1;KCIP-1;YWHAA
Species	Human
Expression Host	E.coli
Sequence	Met 1-Asn 246
Accession	NP_003395.1
Calculated Molecular Weight	54.9 kDa
Observed molecular weight	52 kDa
Tag	N-GST

Properties

Purity	> 96 % as determined by reducing SDS-PAGE.
Endotoxin	Please contact us for more information.
Storage	Generally, lyophilized proteins are stable for up to 12 months when stored at -20 to -80°C. Reconstituted protein solution can be stored at 4-8°C for 2-7 days. Aliquots of reconstituted samples are stable at < -20°C for 3 months.
Shipping	This product is provided as lyophilized powder which is shipped with ice packs.
Formulation	Lyophilized from sterile 20mM Tris, 150mM NaCl, 0.1mM DTT, 10% glycerol, pH 7.5 Normally 5 % - 8 % trehalose, mannitol and 0.01 % Tween80 are added as protectants before lyophilization. Please refer to the specific buffer information in the printed
Reconstitution	Please refer to the printed manual for detailed information.

Data



> 96 % as determined by reducing SDS-PAGE.

Background

14-3-3 beta / YWHAB is a member of the 14-3-3 proteins family. 14-3-3 proteins are a group of highly conserved proteins that are involved in many vital cellular processes such as metabolism, protein trafficking, signal transduction, apoptosis and cell cycle regulation. 14-3-3 proteins are mainly localized in the synapses and neuronal cytoplasm, and seven isoforms have been identified in mammals. This family of proteins was initially identified as adaptor proteins which bind to phosphoserine-containing motifs. Binding motifs and potential functions of 14-3-3 proteins are now recognized to have a wide range of functional relevance. 14-3-3 beta / YWHAB is found in both plants and mammals, and this protein is 100% identical to the mouse ortholog. 14-3-3 beta / YWHAB interacts with CDC25 phosphatases, RAF1 and IRS1

For Research Use Only

A Reliable Research Partner in Life Science and Medicine

Toll-free: 1-888-852-8623

Web: www.elabscience.com

Tel: 1-832-243-6086

Email: techsupport@elabscience.com

Fax: 1-832-243-6017

Recombinant Human 14-3-3 beta/YWHAB Protein (GST Tag)



Catalog Number:PKSH031394

proteins, suggesting its role in diverse biochemical activities related to signal transduction, such as cell division and regulation of insulin sensitivity. 14-3-3 beta / YWHAB has also been implicated in the pathogenesis of small cell lung cancer. 14-3-3 beta / YWHAB binding negatively regulates RSK1 activity to maintain signal specificity and that association/dissociation of the 14-3-3beta-RSK1 complex is likely to be important for mitogen-mediated RSK1 activation.

For Research Use Only

A Reliable Research Partner in Life Science and Medicine

Toll-free: 1-888-852-8623

Web: www.elabscience.com

Tel: 1-832-243-6086

Email: techsupport@elabscience.com

Fax: 1-832-243-6017