

Recombinant Human CSNK1A1/CKI-alpha/CK1 Protein (GST Tag)



Catalog Number:PKSH030400

Note: Centrifuge before opening to ensure complete recovery of vial contents.

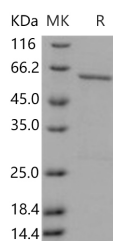
Description

Synonyms	CK1;CK1a;CKIa;HEL-S-77p;HLCDGP1;PRO2975
Species	Human
Expression Host	Baculovirus-Insect Cells
Sequence	Met 1-Phe 337
Accession	P48729-1
Calculated Molecular Weight	65.2 kDa
Observed molecular weight	62 kDa
Tag	N-GST
Bioactivity	The specific activity was determined to be 30 nmol/min/mg using casein as substrate.

Properties

Purity	> 90 % as determined by reducing SDS-PAGE.
Endotoxin	< 1.0 EU per µg of the protein as determined by the LAL method.
Storage	Store at < -20°C, stable for 6 months. Please minimize freeze-thaw cycles.
Shipping	This product is provided as liquid. It is shipped at frozen temperature with blue ice/gel packs. Upon receipt, store it immediately at < -20°C.
Formulation	Supplied as sterile solution of 20mM Tris, 500mM NaCl, 2mM GSH, pH 7.4
Reconstitution	Not Applicable

Data



> 90 % as determined by reducing SDS-PAGE.

Background

Casein kinase I isoform alpha, also known as CKI-alpha, CK1 and CSNK1A1, is a cytoplasm protein which belongs to the protein kinase superfamily, CK1 Ser/Thr protein kinase family and casein kinase I subfamily. Casein kinases are operationally defined by their preferential utilization of acidic proteins such as caseins as substrates. High expression of CSNK2A1, or concomitantly high expression of CSNK2A1, are independent prognostic factors of poor survival in NSCLC patients. CSNK2A1 are useful prognosis markers in non-small cell lung cancer (NSCLC) patients after complete resection, independent of lymph node metastasis status. CSNK1A1 can phosphorylate a large number of proteins. It participates in Wnt signaling. It phosphorylates CTNNB1 at 'Ser-45'. CSNK1A1 may play a role in segregating chromosomes during mitosis.

For Research Use Only

A Reliable Research Partner in Life Science and Medicine

Toll-free: 1-888-852-8623

Web: www.elabscience.com

Tel: 1-832-243-6086

Email: techsupport@elabscience.com

Fax: 1-832-243-6017