

PPIB Monoclonal Antibody

Catalog Number: E-AB-22170



Note: Centrifuge before opening to ensure complete recovery of vial contents.

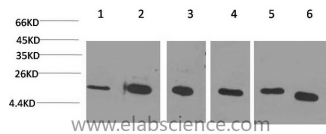
Description

Reactivity	Human, Mouse, Rat
Immunogen	Synthetic Peptide
Host	Mouse
Isotype	IgG
Purification	Protein A purification
Formulation	PBS with 0.02% sodium azide, 0.5% protective protein and 50% glycerol, pH7.4

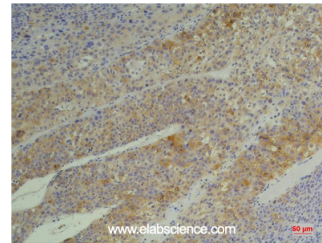
Applications Recommended Dilution

WB	1:1000-2000
IHC	1:100-200

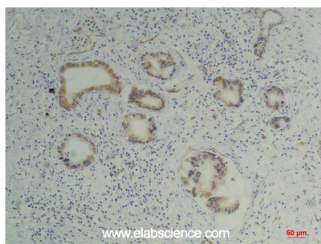
Data



Western Blot analysis of 1) HeLa, 2) Jurkat, 3) 293T, 4) Rat liver, 5) 3T3, 6) HepG2 using PPIB Monoclonal Antibody at dilution of 1:2000.
Observed MW:21kDa



Immunohistochemistry of paraffin-embedded Human hepatocarcinoma tissue using PPIB Monoclonal Antibody at dilution of 1:200.



Immunohistochemistry of paraffin-embedded Human pancreas carcinoma tissue using PPIB Monoclonal Antibody at dilution of 1:200.

Preparation & Storage

Storage Store at -20°C. Avoid freeze / thaw cycles.

Background

The protein encoded by this gene is a cyclosporine-binding protein and is mainly located within the endoplasmic reticulum. It is associated with the secretory pathway and released in biological fluids. This protein can bind to cells derived from T- and B-lymphocytes, and may regulate cyclosporine A-mediated immunosuppression. Variants have been identified in this protein that give rise to recessive forms of osteogenesis imperfecta.

For Research Use Only

A Reliable Research Partner in Life Science and Medicine

Toll-free: 1-888-852-8623

Web: www.elabscience.com

Tel: 1-832-243-6086

Email: techsupport@elabscience.com

Fax: 1-832-243-6017