

# MYL9 Polyclonal Antibody

catalog number: E-AB-12582

**Note:** Centrifuge before opening to ensure complete recovery of vial contents.

## Description

<b>Reactivity</b>	Human;Mouse;Rat
<b>Immunogen</b>	Synthetic peptide of human MYL9
<b>Host</b>	Rabbit
<b>Isotype</b>	IgG
<b>Purification</b>	Affinity purification
<b>Conjugation</b>	Unconjugated
<b>buffer</b>	Phosphate buffered solution, pH 7.4, containing 0.05% stabilizer and 50% glycerol.

## Applications

## Recommended Dilution

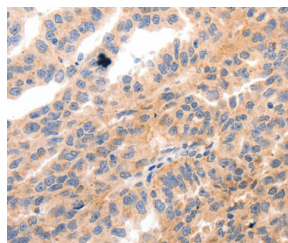
<b>WB</b>	1:1000-1:5000
<b>IHC</b>	1:50-1:200

## Data

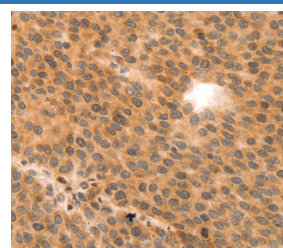


Western Blot analysis of Jurkat and 231 cell using MYL9 Polyclonal Antibody at dilution of 1:1500

**Calculated-MV:14 kDa**



Immunohistochemistry of paraffin-embedded Human ovarian cancer using MYL9 Polyclonal Antibody at dilution of 1:80



Immunohistochemistry of paraffin-embedded Human liver cancer using MYL9 Polyclonal Antibody at dilution of 1:80

## Preparation & Storage

<b>Storage</b>	Store at -20°C Valid for 12 months. Avoid freeze / thaw cycles.
<b>Shipping</b>	The product is shipped with ice pack, upon receipt, store it immediately at the temperature recommended.

## Background

Myosin, a structural component of muscle, consists of two heavy chains and four light chains. The protein encoded by this gene is a myosin light chain that may regulate muscle contraction by modulating the ATPase activity of myosin heads. The encoded protein binds calcium and is activated by myosin light chain kinase. Two transcript variants encoding different isoforms have been found for this gene.

## For Research Use Only