

Recombinant Human IGF-1/IGF1 Protein

Catalog Number:PKSH032594



Note: Centrifuge before opening to ensure complete recovery of vial contents.

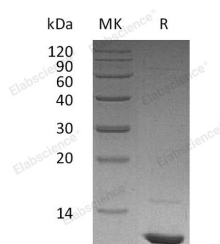
Description

Synonyms	Insulin-Like Growth Factor I;IGF-I;Mechano Growth Factor;MGF;Somatomedin-C;IGF1;IBP1
Species	Human
Expression Host	E.coli
Sequence	Gly49-Ala118
Accession	P05019
Calculated Molecular Weight	7.6 kDa
Tag	None
Bioactivity	Measure by its ability to induce MCF-7 cells proliferation. The ED50 for this effect is 0.9-3. 1ng/mL The, specific activity of recombinant human IGF-I is approximately $>1.2 \times 10^3$ IU/mg.

Properties

Purity	> 95 % as determined by reducing SDS-PAGE.
Endotoxin	< 0.01 EU per µg of the protein as determined by the LAL method.
Storage	Generally, lyophilized proteins are stable for up to 12 months when stored at -20 to -80°C. Reconstituted protein solution can be stored at 4-8°C for 2-7 days. Aliquots of reconstituted samples are stable at < -20°C for 3 months.
Shipping	This product is provided as lyophilized powder which is shipped with ice packs.
Formulation	Lyophilized from a 0.2 µm filtered solution of PBS, pH 7.4. Normally 5 % - 8 % trehalose, mannitol and 0.01% Tween80 are added as protectants before lyophilization. Please refer to the specific buffer information in the printed manual.
Reconstitution	Please refer to the printed manual for detailed information.

Data



> 95 % as determined by reducing SDS-PAGE.

Background

Insulin-like growth factor I (IGF1) belongs to the family of insulin-like growth factors that are structurally homologous to proinsulin. Mature IGFs are generated by proteolytic processing of inactive precursor proteins; which contains the N- and C-terminal propeptide regions. Mature human IGF-I consisting of 70 amino acids has 94% identity with mouse IGF-I and exhibits cross-species activity. IGF-1 binds IGF-IR; IGF-IIR; and the insulin receptor and plays a key role in cell cycle progression; cell proliferation and tumor progression. IGF-1 expression is regulated by growth hormone. R3 IGF-1 is an

For Research Use Only

A Reliable Research Partner in Life Science and Medicine

Toll-free: 1-888-852-8623

Web: www.elabscience.com

Tel: 1-832-243-6086

Email: techsupport@elabscience.com

Fax: 1-832-243-6017

Recombinant Human IGF-1/IGF1 Protein

Catalog Number: PKSH032594



83 amino acid analog of IGF-1 comprising the complete human IGF-1 sequence with the substitution of an Arg (R) for the Glu(E) at position three; hence R3; and a 13 amino acid extension peptide at the N terminus. R3 IGF-1 has been produced with the purpose of increasing biological activity. R3 IGF-1 is significantly more potent than human IGF-I in vitro.

For Research Use Only

A Reliable Research Partner in Life Science and Medicine

Toll-free: 1-888-852-8623

Web: www.elabscience.com

Tel: 1-832-243-6086

Email: techsupport@elabscience.com

Fax: 1-832-243-6017