

Recombinant Lactate Dehydrogenase A Monoclonal Antibody



Catalog Number:E-AB-81451

Note: Centrifuge before opening to ensure complete recovery of vial contents.

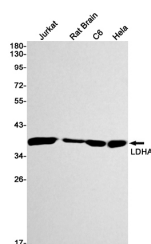
Description

Reactivity	Human,Rat
Immunogen	A synthetic peptide of human Lactate Dehydrogenase
Host	Rabbit
Isotype	IgG
Clone	R09-9A7
Purification	Affinity Purified
Conjugation	Unconjugated
Formulation	50mM Tris-Glycine(pH 7.4), 0.15M NaCl, 40% Glycerol, 0.01% Sodium azide and 0.05% protective protein

Applications Recommended Dilution

WB 1:1000-1:2000

Data



Western blot detection of LDHA in Jurkat,Rat Brain,C6,Hela cell lysates using LDHA Rabbit mAb(1:1000 diluted).Predicted band size:37kDa.Observed band size:37kDa.

Observed Mw:37kDa
Calculated Mw:37kDa

Preparation & Storage

Storage Store at -20°C. Avoid freeze / thaw cycles.

Background

LDHA,also named as LDH-M and NY-REN-59,is an enzyme which catalyzes the inter-conversion of pyruvate and L-lactate with concomitant inter-conversion of NADH and NAD⁺. LDHA is found in most somatic tissues,though predominantly in muscle tissue and tumours,and belongs to the lactate dehydrogenase family. It has long been known that many human cancers have higher LDHA levels compared to normal tissues. It has also been shown that LDHA plays an important role in the development,invasion and metastasis of malignancies. Mutations in LDHA have been linked to exertional myoglobinuria. LDHA has some isoforms with MW 26-40 kDa.

For Research Use Only

A Reliable Research Partner in Life Science and Medicine

Toll-free: 1-888-852-8623

Tel: 1-832-243-6086

Fax: 1-832-243-6017

Web: www.elabscience.com

Email: techsupport@elabscience.com