

FGFR3 Polyclonal Antibody

Catalog Number: E-AB-15633



Note: Centrifuge before opening to ensure complete recovery of vial contents.

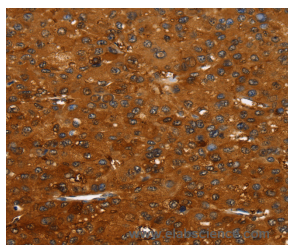
Description

Reactivity	Human ,Mouse
Immunogen	Synthetic peptide of human FGFR3
Host	Rabbit
Isotype	IgG
Purification	Affinity purification
Conjugation	Unconjugated
Formulation	PBS with 0.05% sodium azide and 50% glycerol, PH7.4

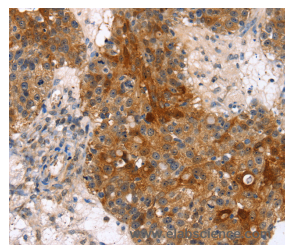
Applications Recommended Dilution

IHC	1:35-1:150
------------	------------

Data



Immunohistochemistry of paraffin-embedded Human liver cancer tissue using FGFR3 Polyclonal Antibody at dilution 1:35



Immunohistochemistry of paraffin-embedded Human breast cancer tissue using FGFR3 Polyclonal Antibody at dilution 1:35

Preparation & Storage

Storage Store at -20°C. Avoid freeze / thaw cycles.

Background

Receptor for acidic and basic fibroblast growth factors. Preferentially binds FGF1.

For Research Use Only

A Reliable Research Partner in Life Science and Medicine

Toll-free: 1-888-852-8623

Web: www.elabscience.com

Tel: 1-832-243-6086

Email: techsupport@elabscience.com

Fax: 1-832-243-6017