

# SIX6 Polyclonal Antibody

catalog number: E-AB-19997

**Note:** Centrifuge before opening to ensure complete recovery of vial contents.

## Description

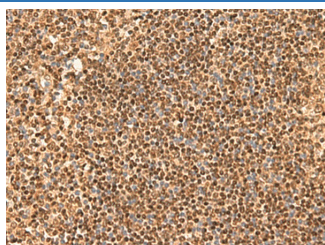
<b>Reactivity</b>	Human;Mouse
<b>Immunogen</b>	Synthetic peptide of human SIX6
<b>Host</b>	Rabbit
<b>Isotype</b>	IgG
<b>Purification</b>	Antigen affinity purification
<b>Conjugation</b>	Unconjugated
<b>buffer</b>	Phosphate buffered solution, pH 7.4, containing 0.05% stabilizer and 50% glycerol.

## Applications

## Recommended Dilution

<b>IHC</b>	1:50-1:300
------------	------------

## Data



Immunohistochemistry of paraffin-embedded Human tonsil tissue using SIX6 Polyclonal Antibody at dilution of 1:50( $\times 200$ )

## Preparation & Storage

<b>Storage</b>	Store at -20°C Valid for 12 months. Avoid freeze / thaw cycles.
<b>Shipping</b>	The product is shipped with ice pack, upon receipt, store it immediately at the temperature recommended.

## Background

The protein encoded by this gene is a homeobox protein that is similar to the Drosophila 'sine oculis' gene product. This gene is found in a cluster of related genes on chromosome 14 and is thought to be involved in eye development. Defects in this gene are a cause of isolated microphthalmia with cataract type 2 (MCOPCT2). SIX6 (SIX Homeobox 6) is a Protein Coding gene. Diseases associated with SIX6 include Optic Disc Anomalies With Retinal And/Or Macular Dystrophy and Six6-Related Eye Disorders. Among its related pathways are Ectoderm Differentiation. GO annotations related to this gene include transcriptional activator activity, RNA polymerase II distal enhancer sequence-specific binding. An important paralog of this gene is SIX3.

## For Research Use Only